

Catalogue 2025



Atlantis



**Atlantis, the guarantee
of sustainability and style
in the headwear industry.**



The textile industry is one of the most polluting in the world. A chaotic cycle of production and consumption, based on the overproduction of low-quality goods, contributes to a worsening situation. We oppose this trend with all our energies. We focus our efforts on quality material, a secure production line, and continuous research and development, in order to create products destined to last.

A bright future with everyday actions.

We create products that last in time, reducing the environmental and improving the social impact, inspiring people that participate in our effort.



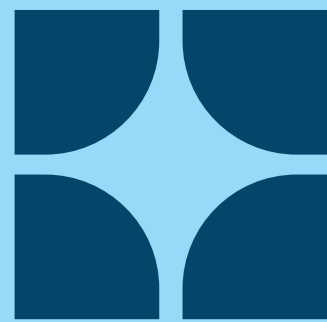


Make the responsible choice possible.



Sustainability and Commitment

Our dedication to quality has evolved into something more: a commitment to a production that is ever more responsible and respectful of the planet and the people.



Concreteness and proactivity

Less talk, more action. The only way to achieve a goal is to work hard. Our strength is expressed through concrete proposals and constructive actions, convincing results and virtuous initiatives. And the cycle continues.

We help brands to tell their story, giving them the tools to do it in a sustainable and responsible way.



Openness and Innovation

Those who resist change are overwhelmed by it. Throughout our history we have always known how to question ourselves, opening ourselves up to innovation. This allows us to understand the world and who we face, and to find the best solution to make diversity shine.



Wisdom Made in Italy

Is doing things well and making them beautiful. It is knowing your roots but being open to influences. Being methodical but not rigid. It is also adding a touch of originality to improve what others have already done well.

Our responsibility



We are serious about our sustainable mission and want to prove that we are transparent and trustworthy through partners who promote the highest standards in the industry.

We want our hats to be on people's heads for as long as possible since high-quality headwear has a longer life cycle.

Through collaborations with international standards and associations, we want to give consumers the certainty that the products they buy have been accredited by a third party. This means that our products are made responsibly and that we work with all partners in our supply chain to adhere to strict environmental and social standards.



Sustainability continues to be at the forefront of Atlantis Headwear's design philosophy.

Several bestsellers will now be available in a new preferred materials versions, maintaining the quality and style loved by many while reducing their environmental impact: look for the “-S” next to the item names to find our iconic models with a new impact!

This commitment to more responsible production is now also reflected in our new certifications: GRS (Global Recycled Standard) and GOTS (Global Organic Textile Standard), ensuring that products meet high environmental and social criteria.



The preferred materials portfolio

The environmental impact benefits derived from our choice of preferred materials are clearly outlined in the 'Sustainable Features' section for each lower-impact product, marked with an asterisk (*). These notations underscore the specific CO₂eq impact reductions, demonstrating the advantages of our environmentally conscious practices.

Life Cycle Assessment (LCA) studies on our top-selling products [1] reveal that 45.5% to 75% of CO₂ equivalent emissions are attributable to the materials used in our hats. This insight drives our preference for recycled materials to mitigate environmental impact significantly. In cases where recycled options are unavailable, we choose virgin materials with the minimal possible environmental footprint or from regenerative sources.

Discover the preferred materials featured in the Atlantis 2025 Collection, designed to collectively reduce the impact of our choices:

- Repreve®
- Polylana®
- Organic cotton
- Recycled cotton
- Recycled polyester
- Recycled nylon
- Recycled polyethylene
- Dope-dyed recycled polyester





Our ongoing product assessment, crucial for our transparency, empowers you with essential information to make informed purchasing decisions. This process also helps optimize our design choices, continually minimizing the environmental impact of our products.

We invite you to explore the CO₂eq impact reductions for each item crafted from our preferred materials[2].

[1] <https://atlantisheadwear.com/en/projects/carbon-footprint/>

[2] Reductions are calculated through a sensitivity analysis contrasting the environmental impact of low-impact materials against conventional ones, using the certified CF Atlantis calculation tool v. 0.7. This tool meticulously tracks the Cradle to gate journey from raw material acquisition to final product delivery at the Atlantis warehouse.



Embracing Circular Innovation with Textile-to- Textile Recycled Polyester

At the core of our innovation lies a deep commitment to environmental responsibility. We continually push the boundaries with polyester, a fiber known for its durability, wrinkle resistance, and lightweight nature. Mechanically recycled polyester (rPET), derived from PET bottles, has been a significant step toward sustainable fashion. It's widely available and makes use of existing waste, thus significantly reducing our environmental footprint. However, recognizing that rPET is not the ultimate solution, we have developed a groundbreaking innovation for our 2025 collection: textile-to-textile recycled polyester. This material starts as textile waste and is chemically transformed into high-quality, recyclable fibers that mimic virgin polyester but have a much lesser environmental impact. Managed under the strictest health and safety standards[1], this process not only adheres to sustainability principles but also challenges the status quo of sustainable materials. Join us as we continue to embrace both established solutions like rPET and exciting new innovations like textile-to-textile recycled polyester, showcased in our Maui baseball hat, all part of our strategy to support a truly circular economy in textiles.

[1] <https://textileexchange.org/pfmm/>





Not only fabrics

We go further, converting every traditional component into a recycled alternative:

RECYCLED VISOR

RECYCLED BUCKRAM

RECYCLED CLOSURES

RECYCLED SWEATBAND

RECYCLED TAPING

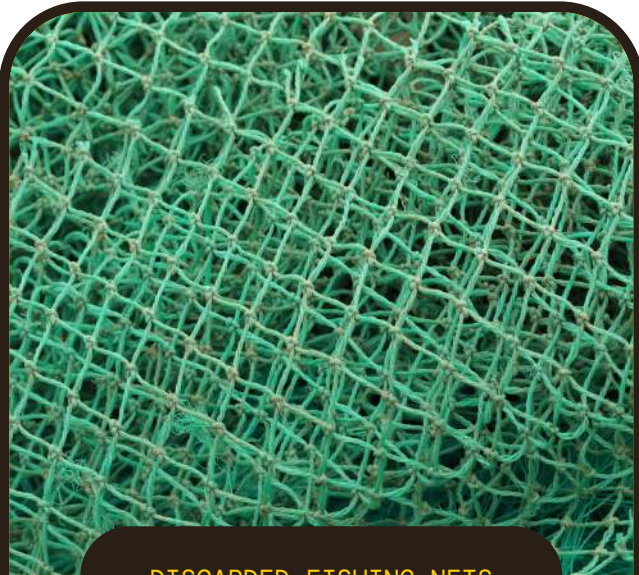
RECYCLED LAMINATION

ReTraze®

ReTraze® collaborates with small businesses, fishermen, and NGOs to collect discarded fishing nets and transform them into 100% recycled PE. Since 2016, ReTraze® has been actively involved in collecting these abandoned fishing nets.

Through years of meticulous research and continuous improvements, they have established a vertical supply chain that effectively converts discarded fishing nets

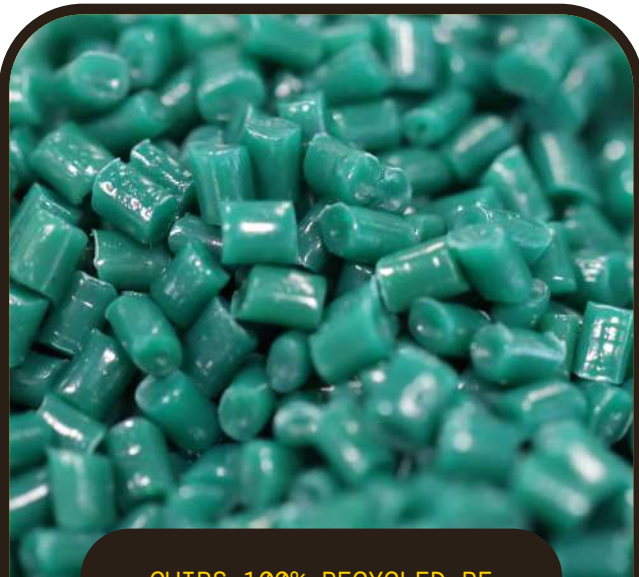
into 100% recycled PE ReTraze® fishing net panels. The recycling process employed by ReTraze® involves physical methods, including sorting, cutting, washing, melting, chipping, extrusion, and precision cutting. Through their efforts, they not only reduce waste, but also create a product that stands testament to the potential of responsible recycling.



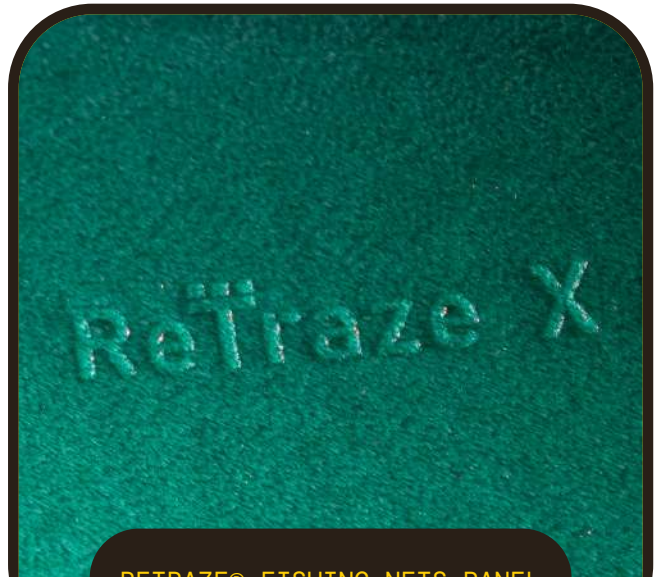
DISCARDED FISHING NETS



FISHING NETS SCRAPS



CHIPS 100% RECYCLED PE



RETRAZE® FISHING NETS PANEL





Headwear that
doesn't just look
good, but does good.



Atlantis Headwear began in the 1990s with a simple mission: to create headwear people could love, wear proudly, and make their own. We wanted to be different, to create something lasting—something that wasn't just 'another hat.' Over the years, as our caps gained popularity and started appearing worldwide, we realized that we had a chance to do something bigger with our products. We didn't want to just make high-quality headwear; we wanted to make a positive impact.

That's when sustainability entered our story in a meaningful way. In 2021, we made a big commitment to produce our entire collection sustainably by 2025. This is more than just changing a few materials. It's a full-scale shift that involves looking at every single element we use—down to the smallest details like threads and buckram—and finding alternatives that still deliver on the quality our customers expect converting, each year, the best sellers to their sustainable alter-ego.

The conversion doesn't just mean changing the materials - which have certainly reduced the environmental impact-, but above all, it has given the company the opportunity to listen to the market improving the hat itself, working on details such as the shape, colors, and enhancing its performance.

It's taken years of research, hundreds of tests, and plenty of determination to get this right, but today we're proud to offer headwear that doesn't just look good but does good. With each cap we make, we're thinking about how we can contribute to a better, more sustainable future.

Wind-S with patch

NEW

- Main Fabric: 100% recycled polyester

Originating from our Wind-S, this classic beanie made from recycled polyester yarn is now enhanced with a large customizable maxi front patch, also made from recycled polyester, making it perfect for branding or decorating.



DARK GREY



BLACK



NAVY

| | |
|----------------------|--|
| TECH SPECS | ONE SIZE · 82 G |
| FEATURES | BLANK PATCH |
| SUSTAINABLE FEATURES | IMPACT REDUCTION: -16% CO ₂ eq* |



100% GRS Recycled Polyester
Certified by ICEA
ICEA-TX-3146

Wind-S with pompom

NEW

- Main Fabric: 100% recycled polyester

Our Wind-S, the collection’s standout beanie, takes on a more playful spirit with a charming pompom also made from recycled polyester, creating a delightful look. It provides warmth and comfort even on the coldest days.



| | |
|----------------------|--|
| TECH SPECS | ONE SIZE · 85 G |
| SUSTAINABLE FEATURES | IMPACT REDUCTION: -16% CO ₂ eq* |



Yukon

NEW

• **Main Fabric:** 97% recycled polyester - 3% elastane

Stretch recycled polyester fabric for a comfortable fit. This cap with structured design and snap back closure guarantee a perfectly balanced look between style and comfort, ideal for those looking for a functional, but modern accessory. Its main feature? It is an easily printable 5 panels, with the look of a classic baseball 6 panels.



WHITE



GREY



DARK GREY



BLACK



NAVY

| | |
|----------------------|--|
| TECH SPECS | ONE SIZE · 200 GSM · RECYCLED SNAPBACK CLOSURE |
| FEATURES | MID VISOR · UNSTRUCTURED FRONT PANEL |
| SUSTAINABLE FEATURES | RECYCLED BUCKRAM · R-PET SWEATBAND · RETRAZE® RECYCLED VISOR IMPACT REDUCTION: -17% CO ₂ eq* |



Main Fabric 97% GRS Recycled Polyester
Sweatband, Buckram
100% GRS Recycled Polyester
Visor 100% GRS Recycled Polyethylene
Certified by ICEA
ICEA-TX-3146

Isar

NEW

• **Main Fabric:** 100% recycled polyester

Characterized by a minimalist style, this cap with a unique jacquard weave pattern is perfect for the most urban sports settings, yet versatile enough to adapt to any situation. Made from recycled polyester, it features a hook & loop closure and a ReTraze® visor.



WHITE



GREY



DARK GREY



BLACK



NAVY



RED



ROYAL

| | |
|----------------------|---|
| TECH SPECS | ONE SIZE · 100 GSM · HOOK AND LOOP CLOSURE |
| FEATURES | MID VISOR · UNSTRUCTURED FRONT PANEL |
| SUSTAINABLE FEATURES | R-PET SWEATBAND · RETRAZE® RECYCLED VISOR IMPACT REDUCTION: -17% CO ₂ eq* |



Main Fabric, Sweatband, Taping
100% GRS Recycled Polyester
Visor 100% GRS Recycled Polyethylene
Certified by ICEA
ICEA-TX-3146

Maui

NEW

• **Main Fabric:** 100% textile-to-textile recycled polyester

A lightweight and comfortable cap, perfect for outdoor sports enthusiasts. Its standout feature is the moisture-wicking fabric, designed to absorb sweat and disperse it for incredibly fast drying. The Dry-Tech fabric on the sweatband and inner front panel ensures maximum functionality during your most active days. This cap doesn't compromise on style, featuring a laser-cut perforated pattern for enhanced breathability. It's also the first product in the collection to use textile-to-textile recycled polyester, made from a blend of 20% post-consumer and 80% pre-consumer materials. This innovative process reduces textile waste and promotes circularity.



WHITE



DARK GREY



BLACK



NAVY

| | |
|----------------------|---|
| TECH SPECS | ONE SIZE · 105 GSM · HOOK&LOOP WITH PLASTIC LOOP ELASTIC STRING |
| FEATURES | MID VISOR · MOISTURE-WICKING · LASER HOLES |
| SUSTAINABLE FEATURES | RETRAZE® RECYCLED VISOR · RECYCLED DRY-TECH SWEATBAND IMPACT REDUCTION: -14% CO ₂ eq* |



Sweatband, Buckram
100% GRS Recycled Polyester
Visor 100% GRS Recycled Polyethylene
Certified by ICEA
ICEA-TX-3146



Main Fabric 100% GRS Recycled Nylon
Mesh, Sweatband, Taping
100% GRS Recycled Polyester

Certified by ICEA
ICEA-TX-3146



Erie

NEW

- **Front&Bill:** 100% recycled nylon
- **Side & Back:** 100% recycled polyester

This cap features a compact design, a lightweight foldable visor, water resistance, soft recycled mesh, quick-drying capabilities, and a dry-tech sweatband — everything sports enthusiasts need for optimal performance.



WHITE



FUCSIA FLUO



YELLOW FLUO



DARK GREY



BLACK



NAVY



OLIVE



RED



STONE

TECH SPECS

ONE SIZE · 120 GSM · RIBBON WITH PLASTIC CLOSURE

FEATURES

FLAT VISOR · SOFT VISOR · WATER RESISTANT - PFC FREE

SUSTAINABLE FEATURES

RECYCLED DRY-TECH SWEATBAND · IMPACT REDUCTION: -18% CO₂eq*

Pico

NEW

• Main Fabric: 100% recycled nylon

This hat is more than just a standard bucket. With its compact, practical design in water-resistant recycled nylon, it's perfect for any outdoor activity. The adjustable closure is ideal for those seeking functionality, especially during high-energy sports.



DARK GREY



BLACK



NAVY



OLIVE

| | |
|----------------------|--|
| TECH SPECS | ONE SIZE · 120 GSM · ADJUSTABLE STRING WITH STOPPER |
| FEATURES | SOFT CROWN · COMPACT DESIGN · WATER RESISTANT - PFC FREE |
| SUSTAINABLE FEATURES | RECYCLED DRY-TECH SWEATBAND · IMPACT REDUCTION: -12% CO ₂ eq* |



Main Fabric 100% GRS Recycled Nylon
Sweatband, Taping
100% GRS Recycled Polyester
Certified by ICEA
ICEA-TX-3146

Rapper Cotton-S

NEW

- **Main Fabric:** 80% organic cotton - 20% recycled cotton
- **Side & Back:** 100% recycled polyester

The ultimate trucker hat. Thanks to its unmistakable shape, it fits any style and use. Made from organic and recycled cotton, it features a recycled polyester snapback closure and a recycled ReTraze® visor.



WHITE-WHITE



WHITE-BLACK



WHITE-NAVY



WHITE-RED



WHITE-RED-ROYAL



WHITE-ROYAL



BURGUNDY-BURGUNDY



BURGUNDY-STONE



GREY-DK GREY-BLACK



GREY-BLACK



DARK GREY-WHITE



DARK GREY-BLACK



DARK GREY-RED



DARK GREY-ROYAL



KHAKI-WHITE



KHAKI-BURGUNDY



KHAKI-BLACK



KHAKI-STONE



MUSTARD-BLACK



BROWN-STONE



BLACK-WHITE



BLACK-DARK GREY



BLACK-BLACK



NAVY-WHITE



NAVY-DARK GREY



NAVY-NAVY



OLIVE-BLACK



RED-RED



ROYAL-ROYAL



PURPLE-WHITE

TECH SPECS

ONE SIZE · 280 GSM · RECYCLED SNAPBACK CLOSURE

FEATURES

CURVED VISOR

SUSTAINABLE FEATURES

RECYCLED BUCKRAM · R-PET SWEATBAND · RECYCLED POLYESTER MESH
IMPACT REDUCTION: -27% CO₂eq*



Mesh, Sweatband, Taping, Buckram
100% GRS Recycled Polyester
Visor 100% GRS Recycled Polyethylene
Certified by ICEA
ICEA-TX-3146

Hit-S

NEW

• **Main Fabric:** 80% organic cotton - 20% recycled cotton

The most classic baseball cap with a distinctive design, enhanced by the choice of organic and recycled cotton twill, and completed with an adjustable metal closure. Style and adaptability, this cap has it all—just choose the right color for every occasion.



| | |
|----------------------|--|
| TECH SPECS | ONE SIZE · 280 GSM · SUNDAY BUCKLE CLOSURE |
| FEATURES | CURVED VISOR · SELF FABRIC SWEATBAND |
| SUSTAINABLE FEATURES | RECYCLED BUCKRAM · RETRAZE® RECYCLED VISOR IMPACT REDUCTION: -32% CO ₂ eq* |




Taping, Buckram,
100% GRS Recycled Polyester
Visor 100% GRS Recycled Polyethylene
Certified by ICEA
ICEA-TX-3146



Taping, Buckram,
100% GRS Recycled Polyester
Visor 100% GRS Recycled Polyethylene
Certified by ICEA
ICEA-TX-3146

Shot-S

NEW

- **Main Fabric:** 80% organic cotton - 20% recycled cotton

Designed to be customized, this hat features a wide five panels printable front, made from organic and recycled cotton. The metal closure and simple design make it the perfect accessory for branding or for event giveaways.



ORANGE



WHITE



BURGUNDY



YELLOW



LIGHT GREY



DARK GREY



KHAKI



BROWN



BLACK



NAVY



OLIVE



RED



PINK



ROYAL



STONE



GREEN



PURPLE

TECH SPECS

ONE SIZE · 280 GSM · SUNDAY BUCKLE CLOSURE

FEATURES

CURVED VISOR · SELF FABRIC SWEATBAND

SUSTAINABLE FEATURES

RECYCLED BUCKRAM · RETRAZE® RECYCLED VISOR
IMPACT REDUCTION: -32% CO₂eq*

Rapper-S

NEW

- **Front & Bill:** 100% recycled polyester
- **Side & Back:** 100% recycled polyester

A trucker hat that has become a streetwear icon, thanks to its padded front panel. This urban-style cap, made from 100% recycled polyester, mesh included, is completed with a recycled snapback closure and a recycled ReTraze® visor.



WHITE-YELLOW



WHITE-BLACK



WHITE-NAVY



WHITE-RED-BLACK



WHITE-RED



WHITE-RED-ROYAL



WHITE-ROYAL



WHITE-GREEN



WHITE-BLACK-GREEN



YELLOW-BLACK



DARKGREY-BURGUNDY



DARK GREY-BLACK



BLACK-BLACK



NAVY-NAVY



OLIVE-BLACK

TECH SPECS

ONE SIZE · 80 GSM · RECYCLED SNAPBACK CLOSURE

FEATURES

CURVED VISOR · PADDED FRONT PANEL

SUSTAINABLE FEATURES

R-PET SWEATBAND · RECYCLED POLYESTER MESH
RETRAZE® RECYCLED VISOR · IMPACT REDUCTION: -14% CO₂eq*



Main Fabric Mesh, Sweatband, Taping
100% GRS Recycled Polyester
Visor 100% GRS Recycled Polyethylene
Certified by ICEA
ICEA-TX-3146

Kid Rapper

NEW

- **Main Fabric:** 100% recycled polyester
- **Side & Back:** 100% recycled polyester

This is the children’s version of our iconic Rapper cap. It features all the elements of its larger counterpart: padded front panel, main fabric and breathable mesh made from recycled polyester, an adjustable snap-back closure, and a recycled ReTraze® visor.



WHITE - YELLOW



WHITE - BLACK



WHITE - NAVY



WHITE - RED



WHITE - ROYAL



WHITE - GREEN

| TECH SPECS | KIDS SIZE · 80 GSM · RECYCLED SNAPBACK CLOSURE |
|----------------------|---|
| FEATURES | CURVED VISOR · PADDED FRONT PANEL |
| SUSTAINABLE FEATURES | R-PET SWEATBAND · RECYCLED POLYESTER MESH RETRAZE® RECYCLED VISOR · IMPACT REDUCTION: -14% CO ₂ eq* |



Main Fabric Mesh, Sweatband, Taping
100% GRS Recycled Polyester
Visor 100% GRS Recycled Polyethylene
Certified by ICEA
ICEA-TX-3146

Sport Sandwich-S

NEW

• **Main Fabric:** 80% organic cotton - 20% recycled cotton

This cap features a sporty design, crafted from lightweight organic and recycled cotton twill. The contrasting sandwich visor adds a pop of style, and the adjustable metal closure, along with the curved ReTraze® recycled visor, makes it an ideal accessory for sports events.



| | |
|----------------------|--|
| TECH SPECS | ONE SIZE · 200 GSM · SNAP BUCKLE WITH SEWN HOLE |
| FEATURES | CURVED VISOR · SANDWICH ON VISOR · LIGHT BRUSHED |
| SUSTAINABLE FEATURES | RECYCLED BUCKRAM · R-PET SWEATBAND · RETRAZE® RECYCLED VISOR IMPACT REDUCTION: -28% CO ₂ eq* |



Sweatband, Taping, Buckram
100% GRS Recycled Polyester
Visor 100% GRS Recycled Polyethylene
Certified by ICEA
ICEA-TX-3146



Taping 100% GRS Recycled Polyester
Visor 100% GRS Recycled Polyethylene
Certified by ICEA
ICEA-TX-3146



Action-S

NEW

- **Main Fabric:** 80% organic cotton - 20% recycled cotton

An unstructured baseball cap made from organic and recycled cotton, known for its comfort and softness due to its washed effect. The extra touch? Two distinctive metal eyelets on the sides, a contrasting under visor and an adjustable closure that fits any size.



WHITE



BURGUNDY



COLUMBIA BLUE



GREY



DARK GREY



KHAKI



BROWN



BLACK



NAVY



OLIVE



RED



PINK



STONE

TECH SPECS

ONE SIZE · 280 GSM · SUNDAY BUCKLE CLOSURE

FEATURES

CURVED VISOR · METAL EYELETS · GARMENT WASHING

SUSTAINABLE FEATURES

RETRAZE® RECYCLED VISOR · IMPACT REDUCTION: -31% CO₂eq*

Digg-S

NEW

• Main Fabric: 50% recycled cotton - 50% virgin cotton

Made from recycled cotton with a pigment-dyed vintage effect, this classic six-panel design features an unstructured front and a metal closure. The perfect hat for vintage lovers and anyone looking to stay effortlessly on-trend.



BURGUNDY



KHAKI



MUSTARD



BLACK



NAVY



OLIVE

| | |
|----------------------|--|
| TECH SPECS | ONE SIZE · 260 GSM · FULL METAL BUCKLE WITH METAL HOLE |
| FEATURES | MID VISOR · UNSTRUCTURED FRONT PANEL · PIGMENT DYED FABRIC |
| SUSTAINABLE FEATURES | RETRAZE® RECYCLED VISOR · R-PET SWEATBAND IMPACT REDUCTION: -8% CO ₂ eq* |



Main Fabric 50% GRS Recycled Cotton
Sweatband, Taping
100% GRS Recycled Polyester
Visor 100% GRS Recycled Polyethylene
Certified by ICEA
ICEA-TX-3146



Main Fabric 81% GRS Recycled Polyester
Underbill, Sweatband, Taping, Buckram
100% GRS Recycled Polyester
Visor 100% GRS Recycled Polyethylene

Certified by ICEA
ICEA-TX-3146

Fam-S

NEW

- **Main Fabric:** 81% recycled polyester - 19% polyester
- **Underbill:** 100% recycled polyester

For those seeking a stylish accessory to elevate a casual outfit, this suede baseball cap with an adjustable metal closure is the ideal choice. Its eye-catching design is further enhanced by a recycled ReTraze® visor.



CARDINAL



GREY



BLACK



NAVY



STONE

TECH SPECS

ONE SIZE · 135 GSM · FULL METAL BUCKLE WITH METAL HOLE

FEATURES

MID VISOR

SUSTAINABLE FEATURES

RECYCLED BUCKRAM · R-PET SWEATBAND · RETRAZE® RECYCLED VISOR
IMPACT REDUCTION: -15% CO₂eq*

Rapper Suede-S

NEW

- **Main Fabric:** 81% recycled polyester - 19% polyester
- **Side & Back:** 100% recycled polyester
- **Underbill:** 100% recycled polyester

Can a trucker hat become elegant? When paired with a suede look that give it a casual sophisticated appearance. Made almost entirely from recycled polyester, it also includes a recycled snapback closure and a recycled ReTraze® visor.



CARDINAL



GREY



BLACK



NAVY



STONE

| | |
|----------------------|--|
| TECH SPECS | ONE SIZE · 135 GSM · RECYCLED SNAPBACK CLOSURE |
| FEATURES | MID VISOR |
| SUSTAINABLE FEATURES | RECYCLED BUCKRAM · R-PET SWEATBAND · RETRAZE® RECYCLED VISOR IMPACT REDUCTION: -16% CO ₂ eq* |



Main Fabric 81% GRS Recycled Polyester
Underbill, Mesh, Sweatband, Taping, Buckram
100% GRS Recycled Polyester
Visor 100% GRS Recycled Polyethylene

Certified by ICEA
ICEA-TX-3146

Record-S

NEW

- **Front & Bill:** 100% recycled polyester
- **Side & Back:** 100% recycled polyester

A trucker hat that has become a streetwear icon, thanks to its padded front panel and the oversized button. This urban-style cap, made from recycled polyester, mesh included, is completed with a recycled snapback closure and a recycled ReTraze® visor.



CARDINAL



DARK GREY



KHAKI



BLACK



NAVY



OLIVE



RED



ROYAL

| | |
|----------------------|---|
| TECH SPECS | ONE SIZE · 200 GSM · RECYCLED SNAPBACK CLOSURE |
| FEATURES | MID VISOR · PADDED FRONT PANEL |
| SUSTAINABLE FEATURES | RETRAZE® RECYCLED VISOR · SELF FABRIC SWEATBAND IMPACT REDUCTION: -17% CO ₂ eq* |



Main Fabric, Mesh, Sweatband, Taping
100% GRS Recycled Polyester
Visor 100% GRS Recycled Polyethylene
Certified by ICEA
ICEA-TX-3146



Gear-S

NEW

- **Main Fabric:** 100% recycled polyester
- **Front & Bill:** 95% recycled polyester - 5% elastane

Sporty design for this cap made of recycled polyester Twill, with a front panel and visor featuring a fabric with a 3D pattern. Perfect for those who embrace a bold style inspired by the motorsport world, it features a hook and loop closure for an adjustable, secure fit.



WHITE



BLACK



NAVY



RED

| | |
|----------------------|--|
| TECH SPECS | ONE SIZE · 230 GSM · HOOK & LOOP CLOSURE |
| FEATURES | CURVED VISOR |
| SUSTAINABLE FEATURES | RECYCLED BUCKRAM · R-PET SWEATBAND · RETRAZE® RECYCLED VISOR IMPACT REDUCTION: -19% CO ₂ eq* |



Main Fabric 95% GRS Recycled Polyester
Underbill, Side and Back, Sweatband, Taping,
Buckram 100% GRS Recycled Polyester
Visor 100% GRS Recycled Polyethylene

Certified by ICEA
ICEA-TX-3146



Sweatband, Taping, Buckram
100% GRS Recycled Polyester
Visor 100% GRS Recycled Polyethylene

Certified by ICEA
ICEA-TX-3146



Pilot-S

NEW

- **Main Fabric:** 80% organic cotton - 20% recycled cotton

This classic hat stands out with its peach-skin finish, providing a soft touch. Made from organic and recycled cotton, it features a ReTraze® curved visor and a full metal buckle closure, making it perfect for those who appreciate comfort without compromising on elegance, especially during the colder months.



KHAKI



BLACK



NAVY



OLIVE



RED



ROYAL

TECH SPECS

ONE SIZE · 355 GSM · FULL METAL BUCKLE WITH SEWN HOLE

FEATURES

CURVED VISOR · HEAVY BRUSHED

SUSTAINABLE FEATURES

RECYCLED BUCKRAM · R-PET SWEATBAND · RETRAZE® RECYCLED VISOR
IMPACT REDUCTION: -31% CO₂eq*

Pilot Piping Sandwich-S NEW

• **Main Fabric:** 80% organic cotton - 20% recycled cotton

This model redefines the Pilot's look with its organic and recycled cotton, featuring contrasting piping on the curved visor and back. The peach-skin finish enhances the overall design, making it both modern and sophisticated.



| | |
|----------------------|--|
| TECH SPECS | ONE SIZE · 355 GSM · FULL METAL BUCKLE WITH METAL HOLE |
| FEATURES | CURVED VISOR · PIPING ON VISOR AND ON BACK · HEAVY BRUSHED |
| SUSTAINABLE FEATURES | RECYCLED BUCKRAM · R-PET SWEATBAND · RETRAZE® RECYCLED VISOR IMPACT REDUCTION: -32% CO ₂ eq* |



Sweatband, Taping, Buckram
100% GRS Recycled Polyester
Visor 100% GRS Recycled Polyethylene
Certified by ICEA
ICEA-TX-3146

Champion-S

NEW

- **Main Fabric:** 100% recycled polyester

A structured hat made from recycled polyester twill, with a full metal buckle and a recycled ReTraze® visor. The ideal choice for your sports or promotional events.



BLACK



NAVY

| | |
|----------------------|--|
| TECH SPECS | ONE SIZE · 300 GSM · FULL METAL BUCKLE WITH SEWN HOLE |
| FEATURES | CURVED VISOR |
| SUSTAINABLE FEATURES | RETRAZE® RECYCLED VISOR · RECYCLED BUCKRAM IMPACT REDUCTION: -19% CO ₂ eq* |



Main Fabric, Sweatband, Taping, Buckram
100% GRS Recycled Polyester
Visor 100% GRS Recycled Polyethylene
Certified by ICEA
ICEA-TX-3146

Winner-S

NEW

- Main Fabric: 100% recycled polyester

A cap made from recycled polyester twill, featuring a visor adorned with celebratory laurel leaves. It's the ideal accessory for award ceremonies or as a giveaway at competitions. The recycled ReTraze® visor and metal-closure strap add the finishing touches.



BLACK



NAVY

| | |
|----------------------|--|
| TECH SPECS | ONE SIZE · 300 GSM · FULL METAL BUCKLE WITH SEWN HOLE |
| FEATURES | CURVED VISOR · LAUREL ON VISOR |
| SUSTAINABLE FEATURES | RECYCLED BUCKRAM · RETRAZE® RECYCLED VISOR IMPACT REDUCTION: -19% CO ₂ eq* |



Main Fabric, Sweatband, Taping, Buckram
100% GRS Recycled Polyester
Visor 100% GRS Recycled Polyethylene
Certified by ICEA
ICEA-TX-3146



Main Fabric 100% GRS Recycled Nylon
Sweatband, Taping, Buckram
100% GRS Recycled Polyester
Visor 100% GRS Recycled Polyethylene

Certified by ICEA
ICEA-TX-3146



Breezy-S

NEW

- **Main Fabric:** 100% recycled nylon

Water-resistant and made from recycled nylon, this hat is designed to withstand tough weather during outdoor activities, while easily transitioning into a stylish accessory. The laser holes enhance its sporty appeal, ensuring excellent breathability.



WHITE



FUCSIA FLUO



YELLOW FLUO



DARK GREY



BLACK



NAVY



STONE



TECH SPECS

ONE SIZE · 120 GSM · RECYCLED SNAPBACK CLOSURE

FEATURES

MID VISOR · WATER RESISTANT - PFC FREE · LASER HOLES

SUSTAINABLE FEATURES

RETRAZE® RECYCLED VISOR · RECYCLED DRY-TECH SWEATBAND
RECYCLED BUCKRAM · IMPACT REDUCTION: -30% CO₂eq*

Helpy-S

NEW

• **Main Fabric:** 100% recycled polyester

Water-resistant, high-visibility hat made with recycled reflective fabric, UV 50+ protection, and a PFC-free water-resistant treatment.

The perfect solution for those seeking safety in low-light conditions or maximum sun exposure.

The under-visor is grey, contrasting with the fluorescent outer colour to ensure visibility without straining the eyes.

Ideal for completing your workwear.



ORANGE FLUO



YELLOW FLUO

| | |
|----------------------|--|
| TECH SPECS | ONE SIZE · 200 GSM · HOOK AND LOOP REFLECT STRAP |
| FEATURES | CURVED VISOR · WATER RESISTANT - PFC FREE · UPF 50+ · REFLECTIVE |
| SUSTAINABLE FEATURES | RECYCLED BUCKRAM · RETRAZE® RECYCLED VISOR · R-PET SWEATBAND IMPACT REDUCTION: -19% CO ₂ eq* |



Main Fabric, Sweatband, Taping, Buckram
100% GRS Recycled Polyester
Visor 100% GRS Recycled Polyethylene

Certified by ICEA
ICEA-TX-3146

Army-S

NEW

- **Main Fabric:** 80% organic cotton - 20% recycled cotton
- **Lining:** 100% recycled polyester

A hat perfect for a range of outdoor activities. With a sporty shape that doesn't sacrifice comfort, it features a garment-wash treatment for extra softness, and ripstop fabric for added durability.



BLACK

OLIVE

| | |
|----------------------|---|
| TECH SPECS | ONE SIZE · 215 GSM · HOOK & LOOP CLOSURE |
| FEATURES | CURVED VISOR · GARMENT WASHING |
| SUSTAINABLE FEATURES | R-PET SWEATBAND · RETRAZE® RECYCLED VISOR IMPACT REDUCTION: -29% CO ₂ eq* |



**Global Recycled Standard**
©TextileChange
Lining, Sweatband, Taping
100% GRS Recycled Polyester
Certified by ICEA
ICEA-TX-3146

Tank-S

NEW

- Main Fabric: 80% organic cotton - 20% recycled cotton

Even army-style caps can showcase refined details, like a peach-skin effect. This model, made from organic and recycled cotton, is perfect for a casual look with a vintage touch. The recycled ReTraze® visor and hook-and-loop closure add to its distinctive style



DARK GREY



KHAKI



BLACK



NAVY



OLIVE

| | |
|----------------------|---|
| TECH SPECS | ONE SIZE · 280 GSM · HOOK & LOOP CLOSURE |
| FEATURES | CURVED VISOR · LIGHT BRUSHED |
| SUSTAINABLE FEATURES | RETRAZE® RECYCLED VISOR · R-PET SWEATBAND IMPACT REDUCTION: -31% CO ₂ eq* |



Sweatband, Taping
100% GRS Recycled Polyester
Visor 100% GRS Recycled Polyethylene
Certified by ICEA
ICEA-TX-3146



Taping
100% GRS Recycled Polyester
Certified by ICEA
ICEA-TX-3146

Uniform-S

NEW

- **Main Fabric:** 80% organic cotton - 20% recycled cotton

This hat is crafted from organic and recycled cotton twill, making it ideal for those seeking a versatile and comfortable accessory. The garment-wash treatment and hook-and-loop closure ensure superior comfort while lending it a more urban style.



KHAKI



BLACK



NAVY



OLIVE

TECH SPECS

ONE SIZE · 280 GSM · HOOK & LOOP CLOSURE

FEATURES

CURVED VISOR · GARMENT WASHING

SUSTAINABLE FEATURES

RETRAZE® RECYCLED VISOR · SELF FABRIC SWEATBAND
IMPACT REDUCTION: -34% CO₂eq*

Swing-S

NEW

• **Main Fabric:** 80% organic cotton - 20% recycled cotton

An American Coppola-style cap with a mid-length visor, perfect for an urban look that nods to the past. Made from organic and recycled cotton with lightweight peach-skin finish and a hook-and-loop closure, it's the ultimate promotional accessory.



DARK GREY



KHAKI



BLACK



NAVY



OLIVE

| | |
|----------------------|---|
| TECH SPECS | ONE SIZE · 280 GSM · HOOK & LOOP CLOSURE |
| FEATURES | MID VISOR · LIGHT BRUSHED |
| SUSTAINABLE FEATURES | RETRAZE® RECYCLED VISOR · R-PET SWEATBAND IMPACT REDUCTION: -28% CO ₂ eq* |



Sweatband, Taping
100% GRS Recycled Polyester
Visor 100% GRS Recycled Polyethylene
Certified by ICEA
ICEA-TX-3146

Bucket Cotton-S

NEW

• **Main Fabric:** 80% organic cotton - 20% recycled cotton

A timeless bucket hat with a relaxed style, made from organic and recycled cotton. Designed with a soft crown for ultimate comfort, it's the perfect accessory to elevate your look—whether you're heading to a concert, sports event, or aperitif.



WHITE



GREY



DARK GREY



KHAKI



BLACK



NAVY



OLIVE



RED



ROYAL

| | |
|----------------------|--|
| TECH SPECS | ONE SIZE · 200 GSM |
| SUSTAINABLE FEATURES | SELF FABRIC SWEATBAND · IMPACT REDUCTION: -32% CO ₂ eq* |



**Global Recycled Standard**
© Textile Exchange
Taping 100%
GRS Recycled Polyester
Certified by ICEA
ICEA-TX-3146

Forever-S

NEW

• Main Fabric: 80% organic cotton - 20% recycled cotton

The bucket hat is the most popular shape of the moment, given a vintage-inspired update in this design crafted for those who truly want to stand out. Made from organic and recycled cotton twill, and softened through a special garment-wash treatment, once worn this hat impresses with its exceptional comfort.



| | |
|----------------------|--|
| TECH SPECS | S/M - L/XL · 280 GSM |
| FEATURES | GARMENT WASHING |
| SUSTAINABLE FEATURES | SELF FABRIC SWEATBAND · IMPACT REDUCTION: -35% CO ₂ eq* |



**Global Recycled Standard**
© Textile Exchange
Taping 100%
GRS Recycled Polyester
Certified by ICEA
ICEA-TX-3146



Recy Five Italia

NEW

- **Main Fabric:** 100% recycled polyester

A timeless classic among structured five-panel caps, this model is made of recycled polyester and features a curved visor, an adjustable hook & loop closure, and contrasting piping in colors inspired by the Italian flag.



WHITE



BLACK



NAVY



RED



ROYAL

TECH SPECS

ONE SIZE · 220 GSM · HOOK & LOOP CLOSURE

FEATURES

CURVED VISOR · HALF PIPING ON VISOR

SUSTAINABLE FEATURES

IMPACT REDUCTION: -7% CO₂eq*

Recy Five Piping

NEW

• Main Fabric: 100% recycled polyester

This five-panel cap features contrasting piping on the visor and is made entirely from recycled polyester. The hook-and-loop closure provides a secure and comfortable fit, making it the perfect promotional accessory for outdoor activities.



ORANGE-WHITE



LIGHT BLUE-WHITE



WHITE-NAVY



BURGUNDY-WHITE



YELLOW-WHITE



GREY-WHITE



KHAKI-NAVY



BLACK-WHITE



NAVY-WHITE



RED-WHITE



PINK-WHITE



ROYAL-WHITE



GREEN-WHITE

| | |
|----------------------|--|
| TECH SPECS | ONE SIZE · 220 GSM · HOOK & LOOP CLOSURE |
| FEATURES | CURVED VISOR · PIPING ON VISOR |
| SUSTAINABLE FEATURES | IMPACT REDUCTION: -16% CO ₂ eq* |



Flash-S

NEW

- Main Fabric: 95% recycled polyester - 5% elastane

A sporty beanie designed with elasticized recycled polyester, perfect for outdoor activities, such as running or jogging.



BLACK



NAVY

| | |
|----------------------|--|
| TECH SPECS | ONE SIZE · 200 G |
| FEATURES | STRETCHABLE FABRIC |
| SUSTAINABLE FEATURES | IMPACT REDUCTION: -14% CO ₂ eq* |



Freedom Basic-S

NEW

• Main Fabric: 100% recycled polyester

This compact multi-use neck warmer is made from recycled polyester featuring REPREEVE® Fiber for optimal performance. It's perfect for sport enthusiasts looking for a versatile and multifunctional accessory.



WHITE



BLACK



NAVY



RED



ROYAL

| | |
|----------------------|--|
| TECH SPECS | 49x26 · 130 G |
| SUSTAINABLE FEATURES | REPREEVE® · IMPACT REDUCTION: -15% CO ₂ eq* |

REPREEVE®





Bandana Goal-S

NEW

- **Main Fabric:** 100% recycled polyester

A lightweight bandana made from recycled polyester, versatile in its use and perfect for a casual or sporty look. A simple yet functional accessory that adds a touch of personality to any outfit.



ORANGE



WHITE



COLUMBIA BLUE



YELLOW



BLACK



NAVY



RED



PINK



ROYAL



GREEN



TECH SPECS

50x50 · 115 G

SUSTAINABLE FEATURES

IMPACT REDUCTION: -16% CO₂eq*

Andy

• Main Fabric: 100% recycled polyester

The composition is undergoing to an upgrade in order to reduce the product environmental impact and it is subordinate to the product lot number. Please refer to the composition shown on the composition label.



| | |
|----------------------|--|
| TECH SPECS | ONE SIZE · 82 G |
| SUSTAINABLE FEATURES | IMPACT REDUCTION: -16% CO ₂ eq* |



Global Recycled Standard
©TextileExchange
100% GRS Recycled Polyester
Certified by ICEA
ICEA-TX-3146

OEKO TEX®
STANDARD 100
SH020 220679
TESTEX

Bank Five-S

- Main Fabric: 100% recycled polyester
- Bill & Underbill: 100% recycled polyester



BURGUNDY-BLACK LIGHTGREY-BLACK DARK GREY-BLACK BLACK-BLACK



NAVY-BLACK KHAKI - BLACK OLIVE - BLACK ROYAL - BLACK

| | |
|----------------------|--|
| TECH SPECS | ONE SIZE · 120 GSM · RECYCLED SNAPBACK CLOSURE |
| FEATURES | FLAT VISOR · LASER HOLES |
| SUSTAINABLE FEATURES | RECYCLED BUCKRAM · R-PET SWEATBAND · RETRAZE® RECYCLED VISOR IMPACT REDUCTION: -20% CO ₂ eq* |




Global Recycled Standard
©TextileExchange
Main Fabric, Sweatband, Taping, Buckram
100% GRS Recycled Polyester
Visor 100% GRS Recycled Polyethylene
Certified by ICEA
ICEA-TX-3146

Beat-S

• Main Fabric: 100% recycled polyester



| | |
|----------------------|--|
| TECH SPECS | ONE SIZE · 300 GSM · RECYCLED SNAPBACK CLOSURE |
| FEATURES | MID VISOR |
| SUSTAINABLE FEATURES | RECYCLED BUCKRAM · R-PET SWEATBAND · RETRAZE® RECYCLED VISOR IMPACT REDUCTION: -17% CO ₂ eq* |



Bill-S

- Main Fabric: 100% recycled polyester
- Lining: 100% recycled polyester



100% GRS Recycled Polyester
Certified by ICEA
ICEA-TX-3146



DARK GREY



BLACK



NAVY

TECH SPECS

ONE SIZE · 105 G

SUSTAINABLE FEATURES

FULL R-PET FLEECE LINING · POLARTEC®
IMPACT REDUCTION: -16% CO₂eq*

Birk

- Main Fabric: 100% recycled polyester



100% GRS Recycled Polyester
Certified by ICEA
ICEA-TX-3146



DARK GREY



BLACK



NAVY



ROYAL

TECH SPECS

ONE SIZE · 30 G

FEATURES

COMPACT DESIGN · FLATLOCK SEAMS

SUSTAINABLE FEATURES

IMPACT REDUCTION: -17% CO₂eq*

Bond-S

• Main Fabric: 97% recycled polyester - 3% elastane



WHITE



BLACK



NAVY

| | |
|----------------------|--|
| TECH SPECS | ONE SIZE · 190 GSM · QUALITY HOOK-AND-LOOP CLOSURE |
| FEATURES | CURVED VISOR · BONDED TAPING · WATER RESISTANT - PFC FREE |
| SUSTAINABLE FEATURES | RECYCLED DRY-TECH · RECYCLED BUCKRAM IMPACT REDUCTION: -14% CO ₂ eq* |



Main Fabric 97% GRS Recycled Polyester
Sweatband, Taping, Buckram
100% GRS Recycled Polyester
Visor 100% GRS Recycled Polyethylene
Certified by ICEA
ICEA-TX-3146

Brad-S

• Main Fabric: 100% recycled polyester yarn



LT GREY MELANGE

DK GREY MELANGE

BLACK

NAVY

OLIVE

TECH SPECS

ONE SIZE · 74 G

FEATURES

DUAL STYLE · BEANIE WITH RIBS

IMPACT REDUCTION: -16% CO₂eq*



100% GRS Recycled Polyester
Certified by ICEA
ICEA-TX-3146



STANDARD
100
SH020 220679
TESTEX

Bryce

- Main Fabric: 100% recycled polyester
- Side & Back: 100% recycled polyester



WHITE-WHITE



DARK GREY-BLACK



KHAKI-BLACK



BLACK-WHITE



BLACK-DARK GREY



BLACK-BLACK



NAVY-WHITE



NAVY-NAVY



OLIVE-BLACK



RED-RED



ROYAL-BLACK

| | |
|----------------------|--|
| TECH SPECS | ONE SIZE · 200 GSM · RECYCLE SNAPBACK CLOSURE |
| FEATURES | MID VISOR |
| SUSTAINABLE FEATURES | RECYCLED BUCKRAM · RETRAZE® RECYCLED VISOR SELF FABRIC SWEATBAND · IMPACT REDUCTION: -21% CO ₂ eq* |



Main Fabric, Taping, Buckram
100% GRS Recycled Polyester
Mesh 72% GRS Recycled Polyester
Visor 100% GRS Recycled Polyethylene

Certified by ICEA
ICEA-TX-3146



Bucket Pocket-S

- Main Fabric: 100% recycled polyester



MUSTARD-BLACK

BLACK-GREY

NAVY-GREY

OLIVE-LIGHT OLIVE

TECH SPECS

ONE SIZE · 85 GSM

FEATURES

REVERSIBLE · FOLDABLE · LOOP STRING WATER RESISTANT - PFC FREE

SUSTAINABLE FEATURES

IMPACT REDUCTION: -15% CO₂eq*

Cordy-S

• Main Fabric: 100% recycled polyester



| | |
|----------------------|--|
| TECH SPECS | ONE SIZE · 230 GSM · HOOK & LOOP CLOSURE |
| FEATURES | CURVED VISOR |
| SUSTAINABLE FEATURES | RECYCLED BUCKRAM · R-PET SWEATBAND · RETRAZE® RECYCLED VISOR IMPACT REDUCTION: -20% CO ₂ eq* |



Main Fabric, Sweatband, Taping, Buckram
100% GRS Recycled Polyester
Visor 100% GRS Recycled Polyethylene
Certified by ICEA
ICEA-TX-3146

Creep-S

• Main Fabric: 100% recycled polyester



| | |
|----------------------|---|
| TECH SPECS | ONE SIZE · 215 GSM · FULL METAL BUCKLE WITH METAL HOLE |
| FEATURES | MID VISOR |
| SUSTAINABLE FEATURES | R-PET SWEATBAND · RETRAZE® RECYCLED VISOR IMPACT REDUCTION: -15% CO ₂ eq* |




Main Fabric, Sweatband, Taping
100% GRS Recycled Polyester
Visor 100% GRS Recycled Polyethylene
Certified by ICEA
ICEA-TX-3146

Cruz

• Main Fabric: 80% organic cotton - 20% recycled cotton



WHITE



DARK GREY



KHAKI



DARK MUSTARD



BLACK



NAVY



OLIVE



| | |
|----------------------|---|
| TECH SPECS | ONE SIZE · 260 GSM · RECYCLED SNAPBACK CLOSURE |
| FEATURES | FLAT VISOR · GARMENT WASHING |
| SUSTAINABLE FEATURES | RETRAZE® RECYCLED VISOR · SELF FABRIC SWEATBAND IMPACT REDUCTION: -32% CO ₂ eq* |



Taping 100% GRS Recycled Polyester
Visor 100% GRS Recycled Polyethylene
Certified by ICEA
ICEA-TX-3146



Taping 100% GRS Recycled Polyester
Visor 100% GRS Recycled Polyethylene

Certified by ICEA
ICEA-TX-3146



Dad Hat Destroyed-S

- Main Fabric: 80% organic cotton - 20% recycled cotton



WHITE



CARDINAL



GREY



DARK GREY



BLACK



NAVY



OLIVE



TECH SPECS

ONE SIZE · 280 GSM · FULL METAL BUCKLE BRASS WITH METAL HOLE

FEATURES

MID VISOR · GARMENT WASHING

SUSTAINABLE FEATURES

RETRAZE® RECYCLED VISOR · SELF FABRIC SWEATBAND
IMPACT REDUCTION: -32% CO₂eq*

Dad Hat-S

• Main Fabric: 80% organic cotton - 20% recycled cotton



| | |
|----------------------|---|
| TECH SPECS | ONE SIZE · 280 GSM · FULL METAL BUCKLE WITH METAL HOLE |
| FEATURES | MID VISOR · GARMENT WASHING |
| SUSTAINABLE FEATURES | RETRAZE® RECYCLED VISOR · SELF FABRIC SWEATBAND IMPACT REDUCTION: -31% CO ₂ eq* |



Estoril-S

• Main Fabric: 100% recycled polyester



| | |
|----------------------|--|
| TECH SPECS | ONE SIZE · 100 GSM · HIGH QUALITY HOOK&LOOP WITH PLASTIC LOOP |
| FEATURES | CURVED VISOR · HALF PIPING ON VISOR |
| SUSTAINABLE FEATURES | RECYCLED BUCKRAM · R-PET SWEATBAND · RETRAZE® RECYCLED VISOR IMPACT REDUCTION: -16% CO ₂ eq* |



Fiji

• Main Fabric: 100% recycled polyester



WHITE



DARK GREY



KHAKI



BLACK



NAVY



OLIVE



RED



ROYAL



BOTTLE GREEN

| | |
|----------------------|--|
| TECH SPECS | ONE SIZE · 200 GSM · HOOK & LOOP CLOSURE |
| FEATURES | CURVED VISOR |
| SUSTAINABLE FEATURES | RECYCLED BUCKRAM · RETRAZE® RECYCLED VISOR SELF FABRIC SWEATBAND · IMPACT REDUCTION: -20% CO ₂ eq* |



Main Fabric, Taping, Buckram
100% GRS Recycled Polyester
Visor 100% GRS Recycled Polyethylene
Certified by ICEA
ICEA-TX-3146



Organic
Certified by ICEA
GOTS-11099



Fraser

- Main Fabric: 100% organic cotton



WHITE



COLUMBIA BLUE



DARK GREY



KHAKI



BLACK



NAVY



OLIVE



RED



CARDINAL RED



PINK



STONE

TECH SPECS

ONE SIZE · 260 GSM · FULL METAL BUCKLE BRASS WITH METAL HOLE

FEATURES

MID VISOR · GARMENT WASHING

SUSTAINABLE FEATURES

RETRAZE® RECYCLED VISOR · SELF FABRIC SWEATBAND
IMPACT REDUCTION: -10% CO₂eq*

Gatsby Street-S

• Main Fabric: 80% organic cotton - 20% recycled cotton



| | |
|----------------------|--|
| TECH SPECS | ONE SIZE · 260 GSM · FULLY CLOSED WITH BUCKLE |
| FEATURES | MID VISOR · GARMENT WASHING |
| SUSTAINABLE FEATURES | SELF FABRIC SWEATBAND · IMPACT REDUCTION: -33% CO ₂ eq* |



Geo

• Main Fabric: 100% recycled polyester



WHITE



DARK GREY



KHAKI



BLACK



NAVY



OLIVE



| | |
|----------------------|--|
| TECH SPECS | ONE SIZE · 200 GSM |
| FEATURES | |
| SUSTAINABLE FEATURES | SELF FABRIC SWEATBAND · IMPACT REDUCTION: -16% CO ₂ eq* |




Global Recycled
Standard
©TextileChange
100% GRS Recycled Polyester
Certified by ICEA
ICEA-TX-3146

Ghibli

- Main Fabric: 100% recycled nylon
- Lining: 100% recycled polyester



DARK GREY - BLACK NAVY - DARK GREY BLACK - DARK GREY

| | |
|----------------------|---|
| TECH SPECS | ONE SIZE · 120 GSM |
| FEATURES | REVERSIBLE · WATER RESISTANT - PFC FREE |
| SUSTAINABLE FEATURES | FULL R-PET FLEECE LINING · IMPACT REDUCTION: -36% CO ₂ eq* |



Main Fabric 100% GRS Recycled Nylon
Lining, Taping 100% GRS Recycled Polyester
Certified by ICEA
ICEA-TX-3146



Globe Trotter-S

- Main Fabric: 80% organic cotton - 20% recycled cotton



KHAKI



OLIVE

TECH SPECS

S/M - L/XL · 260 GSM

FEATURES

METAL EYELETS · GARMENT WASHING

SUSTAINABLE FEATURES

SELF FABRIC SWEATBAND · IMPACT REDUCTION: -37% CO₂eq*

Holly

• Main Fabric: 100% Polylana® polyester

The composition is undergoing to an upgrade in order to reduce the product environmental impact and it is subordinate to the product lot number. Please refer to the composition shown on the composition label.



ORANGE



LIGHT BLUE



BEIGE



BURGUNDY



LT GREY MELANGE



DK GREY



MUSTARD



BLACK



NAVY



OLIVE



RUSTY



ROYAL



ACID GREEN



BOTTLE GREEN

TECH SPECS

ONE SIZE · 58 G

SUSTAINABLE FEATURES

POLYLANA® · IMPACT REDUCTION: -51% CO₂eq*

POLYLANA®

Hotty-S

• Main Fabric: 100% recycled polyester



WHITE



DARK GREY



BLACK



NAVY



OLIVE



RED



ROYAL



| | |
|----------------------|--|
| TECH SPECS | 28x25 CM · 230 GSM · ELASTIC STRING WITH PLASTIC STOPPER |
| FEATURES | COMPACT DESIGN |
| SUSTAINABLE FEATURES | IMPACT REDUCTION: -18% CO ₂ eq* |



100% GRS Recycled Polyester
Certified by ICEA
ICEA-TX-3146



James

• Main Fabric: 100% recycled polyester



| | |
|----------------------|--|
| TECH SPECS | ONE SIZE · 200 GSM · RECYCLED SNAPBACK CLOSURE |
| FEATURES | FLAT VISOR |
| SUSTAINABLE FEATURES | RECYCLED BUCKRAM · RETRAZE® RECYCLED VISOR SELF FABRIC SWEATBAND · IMPACT REDUCTION: -20% CO ₂ eq* |





Main Fabric, Taping, Buckram
100% GRS Recycled Polyester
Visor 100% GRS Recycled Polyethylene

Certified by ICEA
ICEA-TX-3146

Joshua

- Main Fabric: 100% recycled polyester



WHITE



DARK GREY



KHAKI



BLACK



NAVY



OLIVE



RED



ROYAL



BOTTLE GREEN

TECH SPECS

ONE SIZE · 200 GSM · HOOK & LOOP CLOSURE

FEATURES

CURVED VISOR

SUSTAINABLE FEATURES

RECYCLED BUCKRAM · RETRAZE® RECYCLED VISOR
SELF FABRIC SWEATBAND IMPACT REDUCTION: -19% CO₂eq*

Kai

• Main Fabric: 97% recycled polyester - 3% elastane



WHITE



DARK GREY



BLACK



NAVY



SAGE

| | |
|----------------------|---|
| TECH SPECS | ONE SIZE · 195 GSM · HOOK&LOOP CLOSURE PLASTIC LOOP ELASTIC STRING |
| FEATURES | MID VISOR · UPF50+ · SOFT CROWN · WATER RESISTANT - PFC FREE |
| SUSTAINABLE FEATURES | RETRAZE® RECYCLED VISOR · RECYCLED DRY-TECH SWEATBAND IMPACT REDUCTION: -15% CO ₂ eq* |



Main Fabric 97% GRS Recycled Polyester
Sweatband, Taping, Buckram
100% GRS Recycled Polyester
Visor 100% GRS Recycled Polyethylene

Certified by ICEA
ICEA-TX-3146



Kid Fraser

• Main Fabric: 100% organic cotton



COLUMBIA BLUE



KHAKI



BLACK



NAVY



RED



PINK



ROYAL



| | |
|----------------------|---|
| TECH SPECS | KIDS SIZE · 260 GSM · HOOK & LOOP CLOSURE |
| FEATURES | MID VISOR · GARMENT WASHING |
| SUSTAINABLE FEATURES | · SELF FABRIC SWEATBAND IMPACT REDUCTION: -10% CO ₂ eq* |



Organic
Certified by ICEA
GOTS-11099

Kid Mayo

• Main Fabric: 80% organic cotton - 20% recycled cotton



WHITE



COLUMBIA BLUE



BLACK



NAVY



RED



PINK



STONE

TECH SPECS

KIDS SIZE · 280 GSM

SUSTAINABLE FEATURES

SELF FABRIC SWEATBAND · IMPACT REDUCTION: -34% CO₂eq*





Main Fabric, Taping
100% GRS Recycled Polyester
Visor 100% GRS Recycled Polyethylene
Certified by ICEA
ICEA-TX-3146



Kid Nomad-S

- Main Fabric: 100% recycled polyester



KHAKI



OLIVE

TECH SPECS

KIDS SIZE · 120 GSM · FULLY CLOSED WITH RECYCLED CLAMP

FEATURES

CURVED VISOR · UPF50+

SUSTAINABLE FEATURES

RETRAZE® RECYCLED VISOR · SELF FABRIC SWEATBAND
IMPACT REDUCTION: -18% CO₂eq*

Kid Recy Five

• Main Fabric: 100% recycled polyester



| | |
|------------|--|
| TECH SPECS | KIDS SIZE · 220 GSM · HOOK & LOOP CLOSURE |
| FEATURES | CURVED VISOR · IMPACT REDUCTION: -7% CO ₂ eq* |



Kid Snap Back-S

• Main Fabric: 100% recycled polyester



BLACK



NAVY



RED



ROYAL

| | |
|----------------------|--|
| TECH SPECS | KIDS SIZE · 300 GSM · RECYCLED SNAPBACK CLOSURE |
| FEATURES | FLAT VISOR |
| SUSTAINABLE FEATURES | RECYCLED BUCKRAM · R-PET SWEATBAND · RETRAZE® RECYCLED VISOR IMPACT REDUCTION: -19% CO ₂ eq* |



Main Fabric, Sweatband, Taping, Buckram
100% GRS Recycled Polyester
Visor 100% GRS Recycled Polyethylene
Certified by ICEA
ICEA-TX-3146

Kid Star-S

• Main Fabric: 100% organic cotton



WHITE-RED



COLUMBIA BLUE-NAVY



RED-NAVY



ROYAL-WHITE



PINK-WHITE



NAVY-COLUMBIA BLUE



| | |
|----------------------|--|
| TECH SPECS | KIDS SIZE · 260 GSM · HOOK & LOOP CLOSURE |
| FEATURES | CURVED VISOR |
| SUSTAINABLE FEATURES | RECYCLED BUCKRAM · RETRAZE® RECYCLED VISOR SELF FABRIC SWEATBAND · IMPACT REDUCTION: -10% CO ₂ eq* |



Organic
Certified by ICEA
GOTS-11099



100% GRS Recycled Polyester
Certified by ICEA
ICEA-TX-3146



STANDARD
100
SH020 220679
TESTEX

Kid Wind-S

- Main Fabric: 100% recycled polyester



LIGHT BLUE



BLACK



NAVY



RED



PINK



ROYAL



TECH SPECS

KIDS SIZE · 58 G

SUSTAINABLE FEATURES

IMPACT REDUCTION: -16% CO₂eq*

Kid Yala

• Main Fabric: 100% organic cotton



| | |
|----------------------|---|
| TECH SPECS | KIDS SIZE · 50 G |
| SUSTAINABLE FEATURES | IMPACT REDUCTION: -3% CO ₂ eq* |



Liberty Sandwich-S

• Main Fabric: 80% organic cotton - 20% recycled cotton



| | |
|----------------------|--|
| TECH SPECS | ONE SIZE · 270 GSM · SNAP BUCKLE WITH SEWN HOLE |
| FEATURES | CURVED VISOR · SANDWICH ON VISOR · BRUSHED |
| SUSTAINABLE FEATURES | RECYCLED BUCKRAM · R-PET SWEATBAND · RETRAZE® RECYCLED VISOR IMPACT REDUCTION: -30% CO ₂ eq* |



Maple

• Main Fabric: 100% Polylana® polyester

The composition is undergoing to an upgrade in order to reduce the product environmental impact and it is subordinate to the product lot number. Please refer to the composition shown on the composition label.



| | |
|----------------------|--|
| TECH SPECS | ONE SIZE · 80 G |
| SUSTAINABLE FEATURES | IMPACT REDUCTION: -51% CO ₂ eq* |

POLYLANA®





100% GRS Recycled Polyester

Certified by ICEA
ICEA-TX-3146



STANDARD
100

SH020 220679
TESTEX



Moover-S

- Main Fabric: 100% recycled polyester



ROYAL



RED



OLIVE



NAVY



BLACK



DARK GREY



TECH SPECS

ONE SIZE · 60 G

SUSTAINABLE FEATURES

IMPACT REDUCTION: -16% CO₂eq*

Nelson

• Main Fabric: 100% organic cotton



| | |
|----------------------|---|
| TECH SPECS | ONE SIZE · 78 G |
| SUSTAINABLE FEATURES | IMPACT REDUCTION: -3% CO ₂ eq* |



Nomad-S

• Main Fabric: 100% recycled polyester



KHAKI



OLIVE

| | |
|----------------------|---|
| TECH SPECS | ONE SIZE · 120 GSM · FULLY CLOSED WITH RECYCLED CLAMP |
| FEATURES | CURVED VISOR · UPF50+ |
| SUSTAINABLE FEATURES | RETRAZE® RECYCLED VISOR · SELF FABRIC SWEATBAND IMPACT REDUCTION: -18% CO ₂ eq* |



Main Fabric, Taping
100% GRS Recycled Polyester
Visor 100% GRS Recycled Polyethylene
Certified by ICEA
ICEA-TX-3146

Oak

• Main Fabric: 100% Polylana® polyester

The composition is undergoing to an upgrade in order to reduce the product environmental impact and it is subordinate to the product lot number. Please refer to the composition shown on the composition label.



LIGHT BLUE



BEIGE



BURGUNDY



LT GREY MELANGE



DK GREY



MUSTARD



BLACK



NAVY



OLIVE



RUSTY



ACID GREEN

TECH SPECS

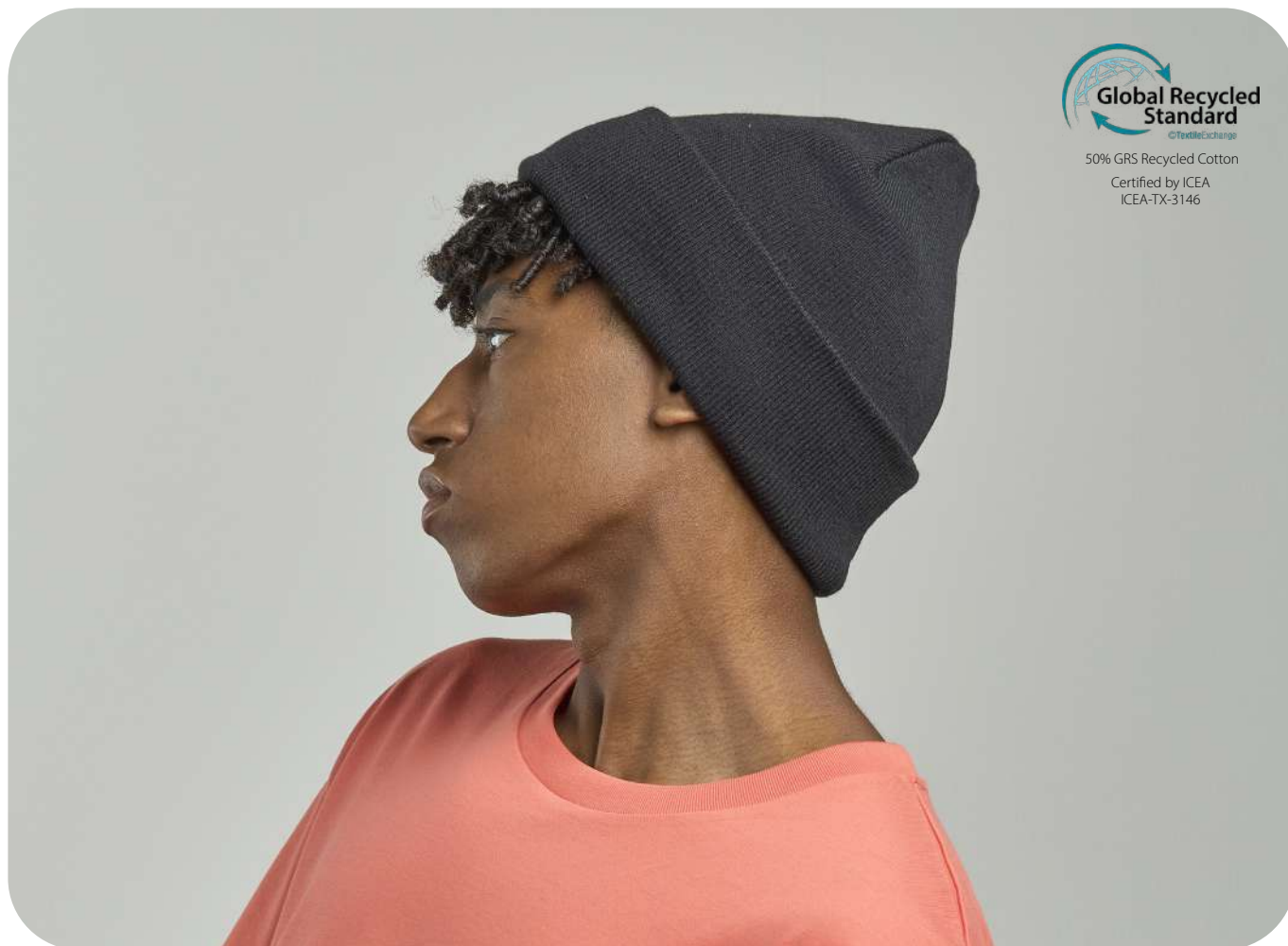
ONE SIZE · 102 G

SUSTAINABLE FEATURES

IMPACT REDUCTION: -51% CO₂eq*

POLYLANA®





Pier-S

- **Main Fabric:** 100% recycled polyester
- **Lining:** 100% recycled polyester



DARK GREY



BLACK



NAVY

TECH SPECS

ONE SIZE · 85 G

SUSTAINABLE FEATURES

FULL R-PET FLEECE LINING · POLARTEC®
 IMPACT REDUCTION: -16% CO₂eq*

Pitch

• Main Fabric: 97% recycled polyester - 3% elastane



DARK GREY



BLACK



NAVY

| | |
|----------------------|---|
| TECH SPECS | S/M - L/XL · 200 GSM · FULLY CLOSED ON BACK |
| FEATURES | MID VISOR · STRETCHABLE FABRIC |
| SUSTAINABLE FEATURES | RETRAZE® RECYCLED VISOR · RECYCLED BUCKRAM RECYCLED ELASTIC SWEATBAND · IMPACT REDUCTION: -17% CO ₂ eq* |



Main Fabric 97% GRS Recycled Polyester
Sweatband 91% GRS Recycled Polyester
Taping, Buckram 100% GRS Recycled Polyester
Visor 100% GRS Recycled Polyethylene

Certified by ICEA
ICEA-TX-3146

Powell

• Main Fabric: 50% recycled cotton - 50% virgin cotton



| | |
|----------------------|---|
| TECH SPECS | ONE SIZE · 260 GSM |
| SUSTAINABLE FEATURES | SELF FABRIC SWEATBAND · IMPACT REDUCTION: -3% CO ₂ eq* |



**Global Recycled Standard**
©TextileChange
50% GRS Recycled Cotton
Certified by ICEA
ICEA-TX-3146

Pure

• Main Fabric: 100% Polyana® polyester

The composition is undergoing to an upgrade in order to reduce the product environmental impact and it is subordinate to the product lot number. Please refer to the composition shown on the composition label.



ORANGE



LIGHT BLUE



BEIGE



BURGUNDY



LT GREY MELANGE



DK GREY



MUSTARD



BLACK



NAVY



OLIVE



RUSTY



ROYAL



ACID GREEN



BOTTLE GREEN

TECH SPECS

ONE SIZE · 90 G

SUSTAINABLE FEATURES

IMPACT REDUCTION: -51% CO₂eq*

POLYLANA®



Rainy-S

- Main Fabric: 100% recycled polyester
- Lining: 100% recycled polyester



GREY



BLACK



NAVY



DARK MUSTARD

| | |
|----------------------|---|
| TECH SPECS | ONE SIZE · 85 GSM · SUNDAY BUCKLE |
| FEATURES | CURVED VISOR · HOT SEALED TAPING · WATER RESISTANT - PFC FREE |
| SUSTAINABLE FEATURES | RETRAZE® RECYCLED VISOR · R-PET MESH LINING RECYCLED DRY-TECH SWEATBAND IMPACT REDUCTION: -15% CO ₂ eq* |



Main Fabric, Lining, Sweatband, Taping
100% GRS Recycled Polyester
Visor 100% GRS Recycled Polyethylene

Certified by ICEA
ICEA-TX-3146



Rapper Canvas-S

- Main Fabric: 100% recycled polyester
- Side&back: 100% recycled polyester



GREY-NAVY



GREY-BLACK



NAVY-BURGUNDY-KHAKI



OLIVE-KHAKI



NAVY-DARK GREY



BLACK-GREY



WHITE-BURGUNDY-BLACK



NAVY-YELLOW



GREY-YELLOW-BLACK BOTTLE



GREEN-YELLOW



ROYAL-GREY



WHITE-YELLOW-DK GREY



NAVY-BURGUNDY



DK GREY-BURGUNDY



BLACK-BLACK



BOTTLE GREEN-WHITE

TECH SPECS

ONE SIZE · 270 GSM · RECYCLED SNAPBACK CLOSURE

FEATURES

MID VISOR

SUSTAINABLE FEATURES

RECYCLED BUCKRAM · RETRAZE® RECYCLED VISOR
SELF FABRIC SWEATBAND · IMPACT REDUCTION: -17% CO₂eq*



Main Fabric, Mesh, Taping, Buckram
100% GRS Recycled Polyester
Visor 100% GRS Recycled Polyethylene

Certified by ICEA
ICEA-TX-3146



Main Fabric, Sweatband, Taping, Buckram
100% GRS Recycled Polyester
Visor 100% GRS Recycled Polyethylene

Certified by ICEA
ICEA-TX-3146

Ray-S

- Main Fabric: 100% recycled polyester



WHITE

DARK GREY

BLACK

NAVY

RED

ROYAL

TECH SPECS

ONE SIZE · 106 GSM · RECYCLED RUBBER HOOK & LOOP CLOSURE

FEATURES

MID VISOR · UPF50+ · WATER RESISTANT - PFC FREE

SUSTAINABLE FEATURES

RECYCLED BUCKRAM · RETRAZE® RECYCLED VISOR
RECYCLED DRY-TECH SWEATBAND · IMPACT REDUCTION: -19% CO₂eq*

Recy Beanie

• Main Fabric: 50% recycled polyester - 50% acrylic



| | |
|----------------------|--|
| TECH SPECS | ONE SIZE · 48 G |
| SUSTAINABLE FEATURES | IMPACT REDUCTION: -37% CO ₂ eq* |



Recy Feel

• Main Fabric: 100% recycled polyester



WHITE



GREEN FLUO



DARK GREY



BLACK



NAVY



ROYAL



| | |
|----------------------|---|
| TECH SPECS | ONE SIZE · 115 GSM · RECYCLED SNAPBACK CLOSURE |
| FEATURES | MID VISOR |
| SUSTAINABLE FEATURES | RECYCLED DRY-TECH SWEATBAND · RETRAZE® RECYCLED VISOR IMPACT REDUCTION: -16% CO ₂ eq* |



Main Fabric, Sweatband, Taping, Buckram
100% GRS Recycled Polyester
Visor 100% GRS Recycled Polyethylene
Certified by ICEA
ICEA-TX-3146

Recy Five

• Main Fabric: 100% recycled polyester



LIGHT BLUE



WHITE



YELLOW



GREY



BLACK



NAVY



RED



ROYAL



GREEN



NEW

ORANGE



NEW

WHITE - NAVY



NEW

BURGUNDY



NEW

KHAKI



NEW

BROWN



NEW

OLIVE



NEW

PINK



NEW

BOTTLE GREEN

TECH SPECS

ONE SIZE · 220 GSM · HOOK & LOOP CLOSURE

FEATURES

CURVED VISOR

SUSTAINABLE FEATURES

IMPACT REDUCTION: -7% CO₂eq*





Recy Six

- Main Fabric: 100% recycled polyester



WHITE



BLACK



NAVY



RED



ROYAL



KHAKI

NEW



OLIVE

NEW

TECH SPECS

ONE SIZE · 220 GSM · HOOK & LOOP CLOSURE

FEATURES

CURVED VISOR

SUSTAINABLE FEATURES

IMPACT REDUCTION: -7% CO₂eq*

Recy Three

• Main Fabric: 50% recycled cotton - 50% virgin cotton



WHITE-WHITE



DARK GREY-BLACK



BLACK-BLACK



NAVY-NAVY



OLIVE-BLACK



RED-WHITE



ROYAL-BLACK

| | |
|----------------------|--|
| TECH SPECS | ONE SIZE · 260 GSM · RECYCLED SNAPBACK CLOSURE |
| FEATURES | MID VISOR |
| SUSTAINABLE FEATURES | RECYCLED BUCKRAM · RETRAZE® RECYCLED VISOR SELF FABRIC SWEATBAND · IMPACT REDUCTION: -11% CO ₂ eq* |



Main Fabric 50% GRS Recycled Cotton
Mesh, Taping, Buckram
100% GRS Recycled Polyester
Visor 100% GRS Recycled Polyethylene

Certified by ICEA
ICEA-TX-3146

Reflect-S

• Main Fabric: 100% recycled polyester



BLACK



NAVY



RED



ROYAL

| | |
|----------------------|--|
| TECH SPECS | ONE SIZE · 200 GSM · SNAP BUCKLE WITH SEWN HOLE |
| FEATURES | CURVED VISOR · WATER RESISTANT - PFC FREE · REFLECTIVE FABRIC |
| SUSTAINABLE FEATURES | RETRAZE® RECYCLED VISOR · RECYCLED BUCKRAM SELF FABRIC SWEATBAND · IMPACT REDUCTION: -16% CO ₂ eq* |



Main Fabric, Taping, Buckram
100% GRS Recycled Polyester
Visor 100% GRS Recycled Polyethylene
Certified by ICEA
ICEA-TX-3146

Rio

• Main Fabric: 100% recycled polyester

The composition is undergoing to an upgrade in order to reduce the product environmental impact and it is subordinate to the product lot number. Please refer to the composition shown on the composition label.



LIGHT BLUE



BEIGE



BURGUNDY



LIGHT GREY



DARK GREY



MUSTARD



BLACK



NAVY



OLIVE



ACID GREEN



BOTTLE GREEN

TECH SPECS

ONE SIZE · 63 G

SUSTAINABLE FEATURES

IMPACT REDUCTION: -16% CO₂eq*



100% GRS Recycled Polyester
Certified by ICEA
ICEA-TX-3146



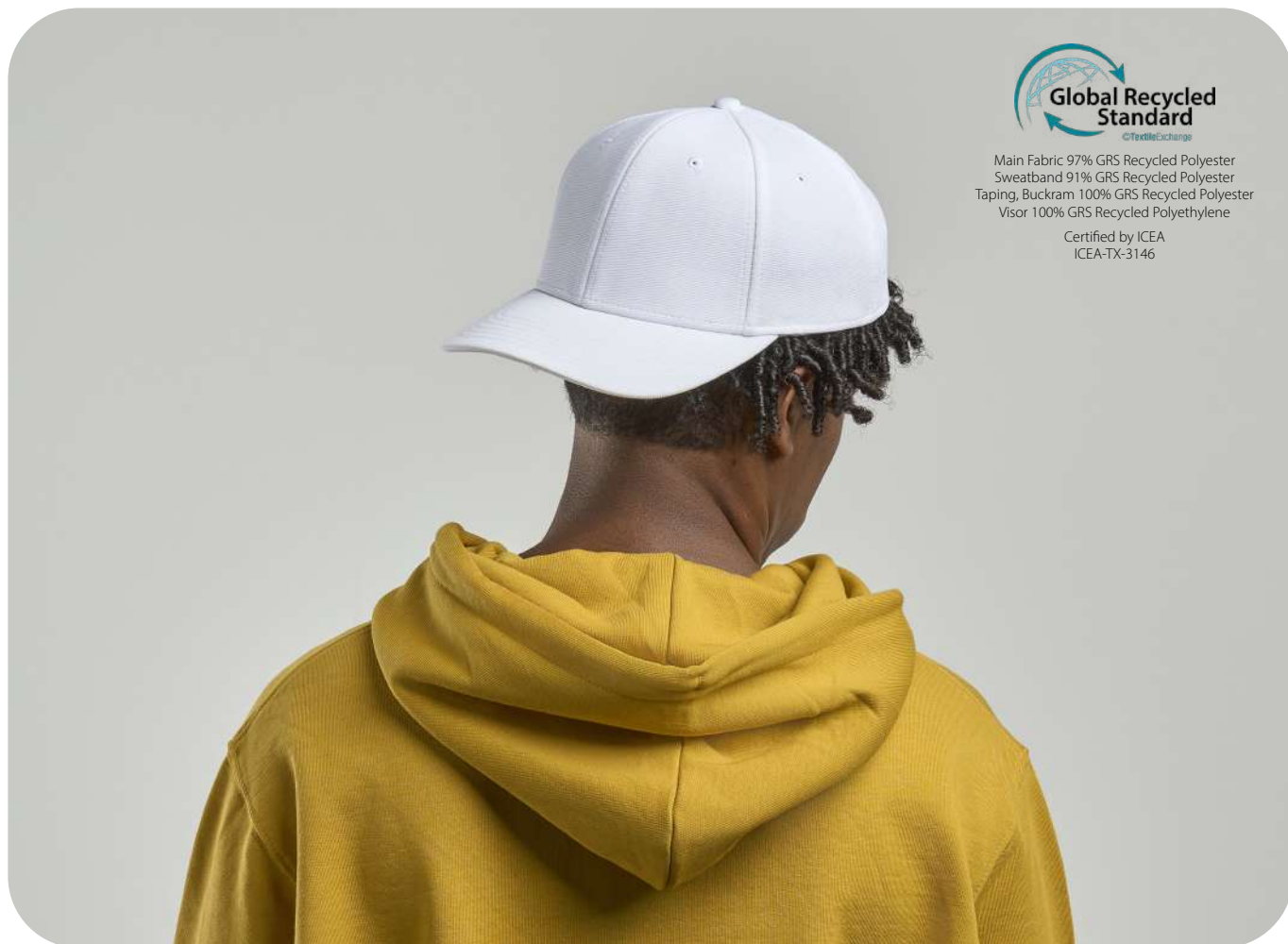
STANDARD
100
SH020 220679
TESTEX





Main Fabric 97% GRS Recycled Polyester
Sweatband 91% GRS Recycled Polyester
Taping, Buckram 100% GRS Recycled Polyester
Visor 100% GRS Recycled Polyethylene

Certified by ICEA
ICEA-TX-3146



Sand

- **Main Fabric:** 97% recycled polyester - 3% elastane

The composition is undergoing to an upgrade in order to reduce the product environmental impact and it is subordinate to the product lot number. Please refer to the composition shown on the composition label.



WHITE



DARK GREY



NAVY



ROYAL



BLACK

TECH SPECS

ONE SIZE · 290 GSM · HOOK&LOOP CLOSURE PLASTIC LOOP ELASTIC STRING

FEATURES

MID VISOR

SUSTAINABLE FEATURES

RETRAZE® RECYCLED VISOR · RECYCLED BUCKRAM
RECYCLED ELASTIC SWEATBAND · IMPACT REDUCTION: -16% CO₂eq*

Shine

• Main Fabric: 100% recycled polyester

The composition is undergoing to an upgrade in order to reduce the product environmental impact and it is subordinate to the product lot number. Please refer to the composition shown on the composition label.



| | |
|----------------------|--|
| TECH SPECS | ONE SIZE · 76 G |
| FEATURES | REFLECTIVE YARN |
| SUSTAINABLE FEATURES | IMPACT REDUCTION: -16% CO ₂ eq* |



Shore

• Main Fabric: 100% recycled polyester

The composition is undergoing to an upgrade in order to reduce the product environmental impact and it is subordinate to the product lot number. Please refer to the composition shown on the composition label.



BEIGE



BURGUNDY



LT GREY



DK GREY



MUSTARD



BLACK



NAVY



OLIVE



RUSTY



BOTTLE GREEN

| | |
|----------------------|--|
| TECH SPECS | ONE SIZE · 80 G |
| SUSTAINABLE FEATURES | IMPACT REDUCTION: -16% CO ₂ eq* |



100% GRS Recycled Polyester
Certified by ICEA
ICEA-TX-3146



STANDARD
100
SH020 220679
TESTEX

Skye

• Main Fabric: 93% recycled polyester - 7% polyester



COCONUT MILK



DARK GREY



BLACK



NAVY



ROYAL



| | |
|----------------------|---|
| TECH SPECS | ONE SIZE · 255 GSM · HIGH QUALITY HOOK&LOOP CLOSURE |
| FEATURES | MID VISOR |
| SUSTAINABLE FEATURES | RETRAZE® RECYCLED VISOR · DOPE DYEING RECYCLED DRY-TECH SWEATBAND · RECYCLED BUCKRAM IMPACT REDUCTION: -20% CO ₂ eq* |



Main Fabric 93% GRS Recycled Polyester
Sweatband, Taping, Buckram
100% GRS Recycled Polyester
Visor 100% GRS Recycled Polyethylene
Certified by ICEA
ICEA-TX-3146



Main Fabric, Sweatband, Taping, Buckram
100% GRS Recycled Polyester
Visor 100% GRS Recycled Polyethylene

Certified by ICEA
ICEA-TX-3146



Snap Back-S

- Main Fabric: 100% recycled polyester



WHITE



CARDINAL



GREY



DARK GREY



BLACK



NAVY



RED



ROYAL



BOTTLE GREEN



BLACK - GREY



BLACK - RED



CAMOUFLAGE-BLACK

TECH SPECS

ONE SIZE · 300 GSM · RECYCLED SNAPBACK CLOSURE

FEATURES

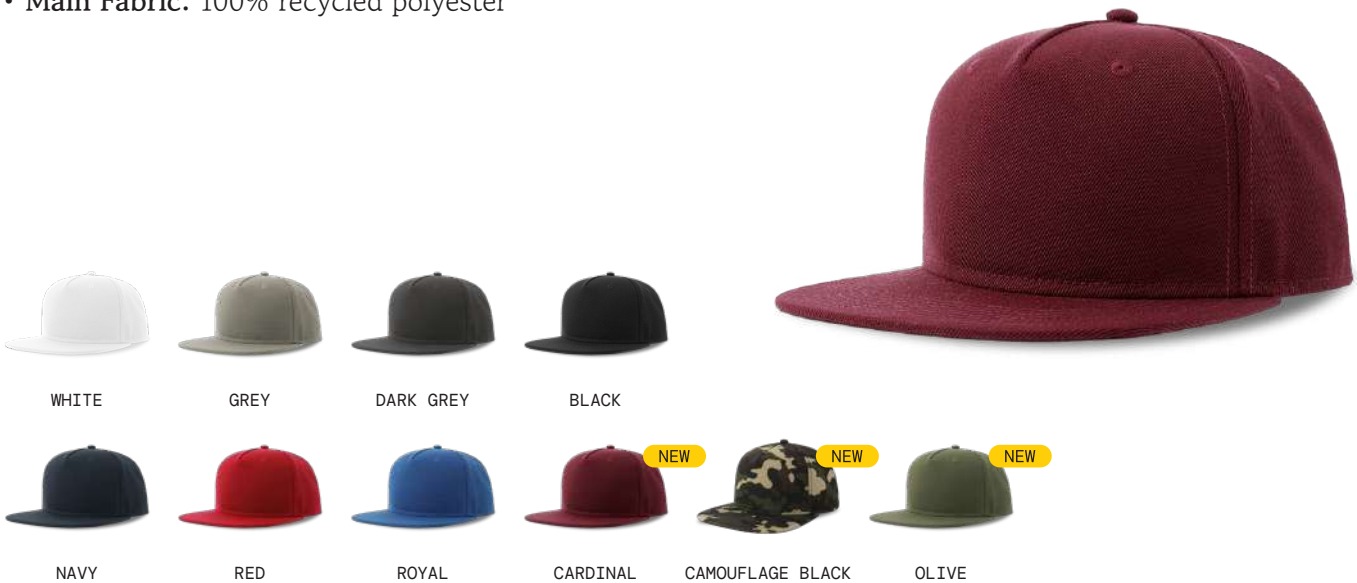
FLAT VISOR

SUSTAINABLE FEATURES

RECYCLED BUCKRAM · R-PET SWEATBAND · RETRAZE® RECYCLED VISOR
IMPACT REDUCTION: -19% CO₂eq*

Snap Five-S

• Main Fabric: 100% recycled polyester



| | |
|----------------------|--|
| TECH SPECS | ONE SIZE · 300 GSM · RECYCLED SNAPBACK CLOSURE |
| FEATURES | FLAT VISOR |
| SUSTAINABLE FEATURES | RECYCLED BUCKRAM · R-PET SWEATBAND · RETRAZE® RECYCLED VISOR IMPACT REDUCTION: -19% CO ₂ eq* |



Main Fabric, Sweatband, Taping, Buckram
100% GRS Recycled Polyester
Visor 100% GRS Recycled Polyethylene
Certified by ICEA
ICEA-TX-3146

Snap Mesh-S

- Main Fabric: 100% recycled polyester
- Side & back: 100% recycled polyester



WHITE-WHITE



ORANGE FLUO-BLACK



BLACK-BLACK



DARK GREY-BLACK



YELLOW FLUO-BLACK



NAVY-NAVY



RED-RED



ROYAL -ROYAL



CAMOUFLAGE-BLACK

NEW

| | |
|----------------------|--|
| TECH SPECS | ONE SIZE · 300 GSM · RECYCLED SNAPBACK CLOSURE |
| FEATURES | FLAT VISOR |
| SUSTAINABLE FEATURES | RECYCLED BUCKRAM · R-PET SWEATBAND · RETRAZE® RECYCLED VISOR IMPACT REDUCTION: -18% CO ₂ eq* |



Main Fabric, Mesh, Sweatband, Taping, Buckram 100% GRS Recycled Polyester
Visor 100% GRS Recycled Polyethylene
Certified by ICEA
ICEA-TX-3146

Snow Flap Stopper-S

• Main Fabric: 100% recycled polyester



DARK GREY



BLACK



NAVY

| | |
|----------------------|---|
| TECH SPECS | ONE SIZE · 230 GSM · FULLY CLOSED WITH RECYCLED STOPPER |
| FEATURES | CURVED VISOR · UNSTRUCTURED FRONT PANEL |
| SUSTAINABLE FEATURES | R-PET SWEATBAND · RETRAZE® RECYCLED VISOR IMPACT REDUCTION: -19% CO ₂ eq* |



Main Fabric, Sweatband, Taping
100% GRS Recycled Polyester
Visor 100% GRS Recycled Polyethylene
Certified by ICEA
ICEA-TX-3146



Mesh, Taping, Buckram
100% GRS Recycled Polyester
Visor 100% GRS Recycled Polyethylene

Certified by ICEA
ICEA-TX-3146

Sonic-S

- Main Fabric: 80% organic cotton - 20% recycled cotton
- Side & Back: 100% recycled polyester



WHITE-WHITE



CARDINAL-BLACK



GREY-BLACK



DARK GREY-BLACK



MUSTARD-BLACK



BLACK-GREY-WHITE



BLACK-BLACK



NAVY-CARDINAL-WHITE



NAVY - NAVY



NAVY-GREY-WHITE



OLIVE-BLACK



BOTTLEGREEN-GREY-STONE



ROYAL-ROYAL



GREY-CARDINAL - STONE

NEW

NEW

NEW

TECH SPECS

ONE SIZE · 280 GSM · RECYCLED SNAPBACK CLOSURE

FEATURES

MID VISOR

SUSTAINABLE FEATURES

RECYCLED BUCKRAM · RETRAZE® RECYCLED VISOR
SELF FABRIC SWEATBAND · IMPACT REDUCTION: -30% CO₂eq*

Techno Flap-S

- Main Fabric: 100% recycled nylon
- Lining: 100% recycled polyester



DARK GREY



BLACK



NAVY



RED

| | |
|----------------------|--|
| TECH SPECS | ONE SIZE · 120 GSM · FULLY CLOSED WITH RECYCLED STOPPER |
| FEATURES | CURVED VISOR · METAL EYELETS · WATER RESISTANT - PFC FREE |
| SUSTAINABLE FEATURES | RETRAZE® RECYCLED VISOR · FULL R-PET FLEECE LINING IMPACT REDUCTION: -31% CO ₂ eq* |



Main Fabric 100% GRS Recycled Nylon
Lining, Taping 100% GRS Recycled Polyester
Visor 100% GRS Recycled Polyethylene
Certified by ICEA
ICEA-TX-3146

Wind Scarf-S

• Main Fabric: 100% recycled polyester



DARK GREY



BLACK



NAVY

| | |
|----------------------|--|
| TECH SPECS | 160x25CM · 146 G |
| SUSTAINABLE FEATURES | IMPACT REDUCTION: -16% CO ₂ eq* |



100% GRS Recycled Polyester
Certified by ICEA
ICEA-TX-3146



STANDARD
100
SH020 220679
TESTEX

Wind-S

• Main Fabric: 100% recycled polyester



| | |
|----------------------|--|
| TECH SPECS | ONE SIZE · 70 G |
| SUSTAINABLE FEATURES | IMPACT REDUCTION: -16% CO ₂ eq* |



100% GRS Recycled Polyester
Certified by ICEA
ICEA-TX-3146



STANDARD
100
SH020 220679
TESTEX



Workout-S

- Main Fabric: 100% recycled polyester



ORANGE FLUO



YELLOW FLUO



BLACK

TECH SPECS

ONE SIZE · 74 G

FEATURES

REFLECTIVE YARN

SUSTAINABLE FEATURES

IMPACT REDUCTION: -16% CO₂eq*

Yala

• Main Fabric: 100% organic cotton



| | |
|----------------------|---|
| TECH SPECS | ONE SIZE · 60 G |
| SUSTAINABLE FEATURES | IMPACT REDUCTION: -3% CO ₂ eq* |



Organic
Certified by ICEA
GOTS-11099

Zion

- Main Fabric: 100% recycled polyester
- Side & Back: 100% recycled polyester



WHITE-WHITE



DARK GREY-BLACK



KHAKI-BLACK



BLACK-WHITE



BLACK-DARK GREY



BLACK-BLACK



NAVY-WHITE



NAVY-NAVY



OLIVE-BLACK



RED-RED



ROYAL-BLACK

| | |
|----------------------|--|
| TECH SPECS | ONE SIZE · 200 GSM · RECYCLED SNAPBACK CLOSURE |
| FEATURES | CURVED VISOR |
| SUSTAINABLE FEATURES | RECYCLED BUCKRAM · RETRAZE® RECYCLED VISOR SELF FABRIC SWEATBAND · IMPACT REDUCTION: -21% CO ₂ eq* |



Main fabric, Taping, Buckram
100% GRS Recycled Polyester
Mesh 72% GRS Recycled Polyester
Visor 100% GRS Recycled Polyethylene

Certified by ICEA
ICEA-TX-3146



Action

• Main Fabric: 100% cotton



ORANGE



LIGHT BLUE



WHITE



BURGUNDY



GREY



DARK GREY



KHAKI



BROWN



BLACK



NAVY



OLIVE



RED



PINK



STONE

| | |
|----------------------|--|
| TECH SPECS | ONE SIZE · 280 GSM · SUNDAY BUCKLE |
| FEATURES | CURVED VISOR · GARMENT WASHING · METAL EYELETS |
| SUSTAINABLE FEATURES | RETRAZE® RECYCLED VISOR |





Army

- **Main Fabric:** 100% cotton
- **Lining:** 79% polyester - 21% cotton



BLACK



NAVY



OLIVE



CAMOUFLAGE

TECH SPECS

ONE SIZE · 180 GSM · HOOK & LOOP CLOSURE

FEATURES

CURVED VISOR · SELF FABRIC SWEATBAND · GARMENT WASHING

SUSTAINABLE FEATURES

RETRAZE® RECYCLED VISOR

Bandana Goal

• Main Fabric: 100% cotton



ORANGE



COLUMBIA BLUE



WHITE



YELLOW



BLACK



NAVY



RED



PINK



ROYAL



GREEN

TECH SPECS

52x52 · 110 GSM

Bandana Long

• Main Fabric: 100% cotton



WHITE



BLACK



NAVY



TECH SPECS

ONE SIZE · 150 GSM

Bank

- Main Fabric: 100% polyester
- Bill&underbill: 100% cotton



DARK GREY-BLACK



BLACK-BLACK



NAVY-BLACK

| | |
|----------------------|---|
| TECH SPECS | ONE SIZE · 90 GSM · SNAPBACK CLOSURE |
| FEATURES | FLAT VISOR · STRUCTURED FRONT PANEL · LASER HOLES |
| SUSTAINABLE FEATURES | RETRAZE® RECYCLED VISOR |

Base

- Main Fabric: 75% nylon - 20% cotton - 5% elastane



WHITE



GREY



BLACK



NAVY



RED



ROYAL

| | |
|----------------------|--|
| TECH SPECS | ONE SIZE · 250 GSM · RUBBER HOO & LOOP CLOSURE |
| FEATURES | MID VISOR · UPF50+ · STRUCTURED FRONT PANEL |
| SUSTAINABLE FEATURES | RETRAZE® RECYCLED VISOR · DRY-TECH SWEATBAND |

Beat

- Main Fabric: 100% polyester
- Underbill: 100% cotton



WHITE



GREY



GREY MELANGE



DARK GREY MELANGE



KHAKI



BLACK



NAVY



BOTTLE GREEN



| | |
|----------------------|---|
| TECH SPECS | ONE SIZE · 300 GSM · SNAPBACK CLOSURE |
| FEATURES | MID VISOR · COTTON SWEATBAND · STRUCTURED FRONT PANEL |
| SUSTAINABLE FEATURES | RETRAZE® RECYCLED VISOR |

Blog

- Main Fabric: 100% acrylic yarn



DARK GREY



MUSTARD



OFF RED



NAVY



DOVE-GREY



BOTTLE GREEN



| | |
|------------|-----------------|
| TECH SPECS | ONE SIZE · 76 G |
|------------|-----------------|

Bolt

• Main Fabric: 100% polyester



WHITE



DARK GREY



BLACK



NAVY



ROYAL



| | |
|----------------------|--|
| TECH SPECS | ONE SIZE · 170 GSM · HIGH QUALITY HOOK & LOOP CLOSURE |
| FEATURES | CURVED VISOR · STRETCHABLE FABRIC · DRY-TECH SWEATBAND |
| SUSTAINABLE FEATURES | RETRAZE® RECYCLED VISOR |

Breezy

• Main Fabric: 100% nylon



FUCSIA FLUO



YELLOW FLUO



DARK GREY



BLACK



NAVY



| | |
|----------------------|--|
| TECH SPECS | ONE SIZE · 100/110 GSM · SNAPBACK CLOSURE |
| FEATURES | MID VISOR · LASER HOLES · STRUCTURED FRONT PANEL |
| SUSTAINABLE FEATURES | RETRAZE® RECYCLED VISOR |

Brooklin

• Main Fabric: 60% cotton - 40% polyester



GREY



DARK GREY



BLACK



NAVY

TECH SPECS

ONE SIZE · 320 GSM

Bucket Cotton

• Main Fabric: 100% cotton



WHITE



KHAKI



BLACK



NAVY



OLIVE



ROYAL

TECH SPECS

ONE SIZE · 180 GSM

FEATURES

SOFT CROWN

SUSTAINABLE FEATURES

SELF FABRIC SWEATBAND

Bucket Pocket

• Main Fabric: 100% polyester



BLACK - GREY



NAVY - GREY

| | |
|------------|-----------------------|
| TECH SPECS | ONE SIZE · 85 GSM |
| FEATURES | FOLDABLE · SOFT CROWN |

Cargo

• Main Fabric: 100% cotton



YELLOW



GREY



KHAKI



BLACK



NAVY



OLIVE



STONE

| | |
|------------|---|
| TECH SPECS | ONE SIZE · 280 GSM · SUNDAY BUCKLE CLOSURE |
| FEATURES | CURVED VISOR · GARMENT WASHING · STRUCTURED FRONT PANEL |

Case

- Main Fabric: 100% cotton
- Side & back: 100% polyester



BURGUNDY-STONE



KHAKI-STONE



MUSTARD-STONE



BLACK-STONE



NAVY-STONE



OLIVE-STONE



| | |
|------------|--|
| TECH SPECS | ONE SIZE · 250 GSM · HOOK & LOOP CLOSURE |
| FEATURES | MID VISOR · PIGMENT DYED FABRIC · UNSTRUCTURED FRONT PANEL |

Champion

- Main Fabric: 100% cotton



BLACK



NAVY



| | |
|------------|---|
| TECH SPECS | ONE SIZE · 320 GSM · FULL METAL BUCKLE WITH SEWN HOLE |
| FEATURES | CURVED VISOR · STRUCTURED FRONT PANEL · SELF FABRIC SWEATBAND |

Dad Hat

• Main Fabric: 100% chino cotton



LIGHT BLUE



WHITE



BURGUNDY



CAMOUFLAGE



GREY



KHAKI



BLACK



NAVY



OLIVE



PINK



STONE



TECH SPECS

ONE SIZE · 280 GSM · FULL METAL BUCKLE WITH METAL HOLE

FEATURES

MID VISOR · UNSTRUCTURED FRONT PANEL · GARMENT WASHING



Dad Hat Destroyed

• Main Fabric: 100% cotton



| | |
|------------|--|
| TECH SPECS | ONE SIZE · 280 GSM · FULL METAL BUCKLE WITH METAL HOLE |
| FEATURES | MID VISOR · GARMENT WASHING · UNSTRUCTURED FRONT PANEL |

Digg

• Main Fabric: 100% cotton



| | |
|------------|--|
| TECH SPECS | ONE SIZE · 250 GSM · FULL METAL BUCKLE WITH METAL HOLE |
| FEATURES | MID VISOR · PIGMENT DYED FABRIC · UNSTRUCTURED FRONT PANEL |

Docker

• Main Fabric: 80% acrylic - 20% polyester



LIGHTGREYMELANGE



BLACK



FOREST GREEN



BLACK MELANGE



NAVY



DOVEGREYMELANGE

TECH SPECS

ONE SIZE · 80 G

Eko Beanie

• Main Fabric: 100% acrylic



ORANGE



AVIO



BURGUNDY



YELLOW



GREY MEL



OFF RED



BLACK



NAVY



OLIVE



FOREST GREEN



PINE GREEN

TECH SPECS

ONE SIZE · 80 G

Energy

• Main Fabric: 100% polyester



WHITE



YELLOW FLUO



LIGHT GREY



BLACK



NAVY



ROYAL



| | |
|------------|---|
| TECH SPECS | ONE SIZE · 110 GSM · HOOK&LOOP WITH PLASTIC LOOP ELASTIC STRING |
| FEATURES | MID VISOR · DRY-TECH SWEATBAND · UPF50+ · WATER RESISTANT |

Estoril

• Main Fabric: 100% polyester



WHITE



BURGUNDY



GREY



DARK GREY



BLACK



NAVY



RED



ROYAL



BOTTLE GREEN



| | |
|------------|---|
| TECH SPECS | ONE SIZE · 150 GSM · HIGH QUALITY HOOK&LOOP WITH PLASTIC BUCKLE |
| FEATURES | CURVED VISOR · HALF PIPING ON VISOR · STRUCTURED FRONT PANEL |

Extreme

- Main Fabric: 73% polyester - 23% cotton - 4% elastane



WHITE-BLACK



BLACK-GREY



BLACK-GREENFLUO



NAVY-GREY

TECH SPECS

ONE SIZE · 45 G

FEATURES

REVERSIBLE · STRETCHABLE FABRIC

Fam

- Main Fabric: 100% polyester
- Underbill: 100% cotton



GREY



BLACK



NAVY

TECH SPECS

ONE SIZE · 130 GSM · FULL METAL BUCKLE WITH METAL HOLE

FEATURES

MID VISOR · STRUCTURED FRONT PANEL · COTTON SWEATBAND

Feed

- Main Fabric: 100% cotton



| | |
|------------|--|
| TECH SPECS | ONE SIZE · 220 GSM · SNAPBACK CLOSURE |
| FEATURES | MID VISOR · ELASTIC SWEATBAND · STRUCTURED FRONT PANEL |

Flash

- Main Fabric: 95% cotton - 5% elastane



| | |
|------------|--------------------|
| TECH SPECS | ONE SIZE · 200 GSM |
| FEATURES | STRETCHABLE FABRIC |

Forever

• Main Fabric: 100% cotton



BEIGE



BLACK



NAVY



OLIVE

| | |
|------------|----------------------|
| TECH SPECS | S/M - L/XL · 280 GSM |
| FEATURES | GARMENT WASHING |

Freedom Basic

• Main Fabric: 100% polyester



WHITE



NAVY



BLACK



ROYAL



RED

| | |
|------------|-----------------|
| TECH SPECS | 49x25 · 130 GSM |
|------------|-----------------|

Gear

- Main Fabric: 100% cotton
- Front&bill: 98% polyester - 2% elastane



| | |
|------------|--|
| TECH SPECS | ONE SIZE · 280 GSM · HOOK & LOOP CLOSURE |
| FEATURES | CURVED VISOR · STRUCTURED FRONT PANEL · COTTON SWEATBAND |

Gloves Touch

- Main Fabric: 100% acrylic



| | |
|------------|-------------------|
| TECH SPECS | S/M - L/XL · 58 G |
|------------|-------------------|

Groovy

• Main Fabric: 100% cotton



AVIO



BURGUNDY



GREY



BLACK



NAVY



OLIVE



STONE



TECH SPECS

ONE SIZE · 260 GSM · SUNDAY BUCKLE

FEATURES

MID VISOR · UNSTRUCTURED FRONT PANEL · SELF FABRIC SWEATBAND
ENZYME WASHING

Helpy

• Main Fabric: 100% polyester



ORANGE



YELLOW



TECH SPECS

ONE SIZE · 300 GSM · HOOK & LOOP REFLECT STRAP

FEATURES

CURVED VISOR · STRUCTURED FRONT PANEL · REFLECTIVE BAND

Hit

• Main Fabric: 100% cotton



WHITE



BURGUNDY



LIGHT GREY



DARK GREY



BLACK



NAVY



RED



LIGHT PINK



ROYAL



OLIVE



TECH SPECS

ONE SIZE · 280 GSM · SUNDAY BUCKLE

FEATURES

CURVED VISOR · STRUCTURED FRONT PANEL · SELF FABRIC SWEATBAND



Hotty

• Main Fabric: 100% polyester



BLACK



NAVY

TECH SPECS

28x25 CM · 230 GSM · ELASTIC STRING WITH PLASTIC STOPPER

Jolly

• Main Fabric: 100% cotton



BLACK



NAVY



RED

TECH SPECS

ONE SIZE · 280 GSM · HOOK & LOOP CLOSURE

FEATURES

CURVED VISOR · STRUCTURED FRONT PANEL · SELF FABRIC SWEATBAND

Kid Start Five

• Main Fabric: 100% cotton



BLACK



NAVY

| | |
|------------|---|
| TECH SPECS | KIDS SIZE · 165 GSM · HOOK & LOOP CLOSURE |
| FEATURES | CURVED VISOR · STRUCTURED FRONT PANEL |

Liberty Five

• Main Fabric: 100% cotton



WHITE



LIGHT GREY



KHAKI



BLACK



NAVY



RED



ROYAL



BOTTLE GREEN

| | |
|------------|---|
| TECH SPECS | ONE SIZE · 260-265 GSM · HOOK & LOOP CLOSURE |
| FEATURES | CURVED VISOR · STRUCTURED FRONT PANEL · HEAVY BRUSHED |

Liberty Five Buckle

• Main Fabric: 100% cotton



WHITE

LIGHT GREY

KHAKI

BLACK



NAVY

RED

ROYAL

BOTTLE GREEN

| | |
|------------|---|
| TECH SPECS | ONE SIZE · 260-265 GSM · SNAP BUCKLE WITH SEWN HOLE |
| FEATURES | CURVED VISOR · STRUCTURED FRONT PANEL · HEAVY BRUSHED |



Liberty Sandwich

• Main Fabric: 100% cotton



ORANGE-ORANGE



LIGHTBLUE-WHITE



WHITE-NAVY



WHITE-WHITE



BURGUNDY-NATURAL



GREY-WHITE



LIGHTGREY-WHITE



GREY-NAVY-GREY



DARK GREY-WHITE



KHAKI-NAVY



KHAKI-KHAKI



BROWN-NATURAL



NATURAL-NAVY-NATURAL



BLACK-WHITE



BLACK-GREY-BLACK



BLACK-BLACK



BLACK-RED



NAVY-WHITE



NAVY-NAVY



OLIVE-NATURAL



RED-WHITE



RED-NAVY-RED



PINK-WHITE



ROYAL-WHITE



TURQUOISE-WHITE



BOTTLE GREEN-WHITE



GREEN-WHITE



PURPLE-WHITE

TECH SPECS

ONE SIZE · 275 GSM · SNAP BUCKLE WITH SEWN HOLE

FEATURES

CURVED VISOR · STRUCTURED FRONT PANEL · SANDWICH ON VISOR
HEAVY BRUSHED



Liberty Six

• Main Fabric: 100% cotton



| | |
|------------|---|
| TECH SPECS | ONE SIZE · 260-265 GSM · HOOK & LOOP CLOSURE |
| FEATURES | CURVED VISOR · STRUCTURED FRONT PANEL · HEAVY BRUSHED |

Liberty Six Buckle

• Main Fabric: 100% cotton



| | |
|------------|--|
| TECH SPECS | ONE SIZE · 260-265 GSM · FULL METAL BUCKLE WITH METAL HOLE |
| FEATURES | CURVED VISOR · STRUCTURED FRONT PANEL · HEAVY BRUSHED |

Moover

• Main Fabric: 100% acrylic



DARK GREY

NAVY



TECH SPECS

ONE SIZE · 55 G

Pilot

• Main Fabric: 100% cotton



KHAKI

BLACK

NAVY

OLIVE



TECH SPECS

ONE SIZE · 320 GSM · FULL METAL BUCKLE WITH SEWN HOLE

FEATURES

CURVED VISOR · STRUCTURED FRONT PANEL · HEAVY BRUSHED

Pilot Piping Sandwich

• Main Fabric: 100% cotton



ROYAL-WHITE



BLACK-WHITE



NAVY-WHITE



RED-WHITE



| | |
|------------|--|
| TECH SPECS | ONE SIZE · 320 GSM · FULL METAL BUCKLE WITH METAL HOLE |
| FEATURES | CURVED VISOR · STRUCTURED FRONT PANEL · PIPING ON VISOR HEAVY BRUSHED |



Racing

- Main Fabric: 94% polyester - 6% viscose



ORANGE-GREY



LIGHT BLUE-NAVY



YELLOW-NAVY



BLACK-GREY



TECH SPECS

ONE SIZE · 180 GSM · HOOK & LOOP CLOSURE

CURVED VISOR · STRUCTURED FRONT PANEL

Rapper

- Main Fabric: 100% polyester
- Side & Back: 100% polyester



ORANGE FLUO



ORANGE-BLACK



WHITE-BLACK-BURGUNDY



WHITE-OLIVE-ORANGE



WHITE-RED-BLACK



WHITE-RED-ROYAL



WHITE-GREEN



FUCHSIA FLUO



YELLOW FLUO



YELLOW-BLACK



DARK GREY-RED



BLACK



BLACK-BLACK



NAVY



OLIVE-BLACK



RED



ROYAL



GREEN



GREEN FLUO

TECH SPECS

ONE SIZE · 80 GSM · SNAPBACK CLOSURE

FEATURES

CURVED VISOR · PADDED FRONT PANEL

Rapper Canvas

- Main Fabric: 100% cotton
- Side & Back: 100% polyester



OLIVE-KHAKI



GREY-BLACK



GREY-BRIGHT YELLOW-BLACK



GREY-NAVY-NAVY



WHITE-YELLOW-DK GREY



DARK GREY-RED



NAVY-DARK GREY



BLACK-GREY



NAVY-BURGUNDY



NAVY-BURGUNDY-BEIGE



NAVY-YELLOW



WHITE-BURGUNDY-BLACK



ROYAL-GREY



BOTTLE GREEN-WHITE

TECH SPECS

ONE SIZE · 260 GSM · SNAPBACK CLOSURE

FEATURES

CURVED VISOR · STRUCTURED FRONT PANEL · GARMENT WASHING
SHORT VISOR



Rapper Cotton

- Main Fabric: 100% cotton
- Side & Back: 100% polyester



WHITE-WHITE BURGUNDY-BURGUNDY BURGUNDY-STONE



DARK GREY-BLACK KHAKE-STONE MUSTARD-BLACK BLACK-BLACK NAVY-GREY



NAVY-NAVY OLIVE-BLACK RED-RED ROYAL-ROYAL PURPLE-WHITE

| | |
|------------|---------------------------------------|
| TECH SPECS | ONE SIZE · 180 GSM · SNAPBACK CLOSURE |
| FEATURES | CURVED VISOR · STRUCTURED FRONT PANEL |



Rapper Destroyed

- Main Fabric: 100% cotton
- Side & Back: 100% polyester



WHITE WHITE



BLACK BLACK

| | |
|------------|--|
| TECH SPECS | ONE SIZE · 280 GSM · SNAPBACK CLOSURE |
| FEATURES | CURVED VISOR · PADDED FRONT PANEL · GARMENT WASHING DESTROYED EFFECT |

Rapper Jersey

- Main Fabric: 100% cotton
- Side & Back: 100% polyester



BURGUNDY



LIGHT GREY



DARK GREY



BLACK



NAVY

| | |
|------------|--|
| TECH SPECS | ONE SIZE · 220 GSM · SNAPBACK CLOSURE |
| FEATURES | MID VISOR · STRUCTURED FRONT PANEL · SOFT MESH |

Rapper Melange

- Main Fabric: 73% cotton - 27% polyester
- Side & Back: 100% polyester
- Underbill: 100% cotton



LIGHT GREY



DARK GREY



KHAKI



BROWN



NAVY



RED



TECH SPECS

ONE SIZE · 219 GSM · SNAPBACK CLOSURE

FEATURES

MID VISOR · STRUCTURED FRONT PANEL · COTTON SWEATBAND

Rapper Suede

- Main Fabric: 100% polyester
- Side & back: 100% polyester



BEIGE



BURGUNDY



GREY



BLACK



NAVY



TECH SPECS

ONE SIZE · 130 GSM · SNAPBACK CLOSURE

FEATURES

MID VISOR · STRUCTURED FRONT PANEL · COTTON SWEATBAND

Record

- Main Fabric: 100% cotton
- Side&back: 100% polyester



BURGUNDY



BLACK



NAVY



OLIVE



RED



ROYAL



TECH SPECS

ONE SIZE · 280 GSM · SNAPBACK CLOSURE

FEATURES

MID VISOR · PADDED FRONT PANEL

Reflect

- Main Fabric: 65% polyester - 35% cotton



BLACK



NAVY



RED



TECH SPECS

ONE SIZE · 180 GSM · SNAP BUCKLE WITH SEWN HOLE

FEATURES

CURVED VISOR · STRUCTURED FRONT PANEL · REFLECT PIPING ON VISOR

Roland

• Main Fabric: 100% cotton



WHITE



KHAKI



BLACK



NAVY

| | |
|------------|--|
| TECH SPECS | ONE SIZE · 165 GSM · HOOK & LOOP CLOSURE |
| FEATURES | CURVED VISOR · STRUCTURED FRONT PANEL |

Shot

• Main Fabric: 100% cotton



WHITE



YELLOW



LIGHT GREY



DARK GREY



BLACK



NAVY



RED



ROYAL



GREEN

| | |
|------------|---|
| TECH SPECS | ONE SIZE · 280 GSM · SUNDAY BUCKLE |
| FEATURES | CURVED VISOR · STRUCTURED FRONT PANEL · SELF FABRIC SWEATBAND |

Skate

- Main Fabric: 100% acrylic



BLACK



NAVY



TECH SPECS

ONE SIZE · 69 G

Snap 90S

- Main Fabric: 100% polyester
- Side & Back: 100% polyester



WHITE-BLACK



WHITE-NAVY



WHITE-ROYAL



NAVY-NAVY



WHITE-RED



TECH SPECS

ONE SIZE · 80 GSM · SNAPBACK CLOSURE

FEATURES

FLAT VISOR · PADDED FRONT PANEL · COTTON SWEATBAND

Snap Back

- Main Fabric: 100% polyester
- Underbill: 100% cotton



WHITE



BURGUNDY



GREY MELANGE



BLACK



BLACK-GREY



BLACK-RED



NAVY



NAVY-RED

TECH SPECS

ONE SIZE · 300 GSM · SNAPBACK CLOSURE

FEATURES

FLAT VISOR · STRUCTURED FRONT PANEL · COTTON SWEATBAND



Snap Five

- Main Fabric: 100% polyester
- Underbill: 100% cotton



| | |
|------------|--|
| TECH SPECS | ONE SIZE · 300 GSM · SNAPBACK CLOSURE |
| FEATURES | FLAT VISOR · STRUCTURED FRONT PANEL · COTTON SWEATBAND |

Snobby

- Main Fabric: 100% acrylic



| | |
|------------|-----------------|
| TECH SPECS | ONE SIZE · 85 G |
|------------|-----------------|

Snow Flap Stopper

- Main Fabric: 100% polyester



BLACK

| | |
|------------|--|
| TECH SPECS | ONE SIZE · 240 GSM · FULLY CLOSED ON BACK WITH STOPPER |
| FEATURES | CURVED VISOR · UNSTRUCTURED FRONT PANEL SELF FABRIC SWEATBAND |

Sonic

- Main Fabric: 100% cotton
- Side & Back: 100% polyester



WHITE



GREY MEL-BLACK



GREYMEL-CARDINAL-BEIGE



MUSTARD-BLACK



BLACK



BLACK-GREY MEL-WHITE



NAVY



NAVY-GREY MEL-WHITE



OLIVE-BLACK



ROYAL



BTL GREEN-GREY MEL-BEIGE

| | |
|------------|---------------------------------------|
| TECH SPECS | ONE SIZE · 280 GSM · SNAPBACK CLOSURE |
| FEATURES | MID VISOR · STRUCTURED FRONT PANEL |

Space

• Main Fabric: 100% polyester



WHITE



BLACK



OLIVE



RED



TECH SPECS

ONE SIZE · 125 GSM · HOOK & LOOP CLOSURE

FEATURES

CURVED VISOR · STRUCTURED FRONT PANEL

Sport Sandwich

• Main Fabric: 100% cotton



WHITE-NAVY



WHITE-WHITE



DARK GREY-WHITE



GREY-WHITE



KHAKI-NAVY



BLACK-WHITE



BLACK-BLACK



NAVY-WHITE



NAVY-NAVY



OLIVE-WHITE



RED



ROYAL



GREEN



BOTTLE GREEN



TECH SPECS

ONE SIZE · 180 GSM · SNAP BUCKLE WITH SEWN HOLE

FEATURES

CURVED VISOR · STRUCTURED FRONT PANEL · SANDWICH ON VISOR

Start Five

• Main Fabric: 100% cotton



| | |
|------------|--|
| TECH SPECS | ONE SIZE · 165 GSM · HOOK & LOOP CLOSURE |
| FEATURES | CURVED VISOR · STRUCTURED FRONT PANEL |



Start Five Italia

• Main Fabric: 100% cotton



WHITE



BLACK



NAVY



RED



ROYAL

TECH SPECS

ONE SIZE · 165 GSM · HOOK & LOOP CLOSURE

FEATURES

CURVED VISOR · STRUCTURED FRONT PANEL · HALF PIPING ON VISOR

Start Five Sandwich

• Main Fabric: 100% cotton



ORANGE-WHITE



WHITE-NAVY



BURGUNDY-WHITE



YELLOW-WHITE



GREY-WHITE



KHAKI-NAVY



BLACK-WHITE



NAVY-WHITE



RED-WHITE



ROYAL-WHITE



GREEN-WHITE

TECH SPECS

ONE SIZE · 165 GSM · HOOK & LOOP CLOSURE

FEATURES

CURVED VISOR · STRUCTURED FRONT PANEL · SANDWICH ON VISOR

Start Six

• Main Fabric: 100% cotton



| | |
|------------|--|
| TECH SPECS | ONE SIZE · 165 GSM · HOOK & LOOP CLOSURE |
| FEATURES | CURVED VISOR · STRUCTURED FRONT PANEL |

Swing

• Main Fabric: 100% cotton



| | |
|------------|--|
| TECH SPECS | ONE SIZE · 235 GSM · HOOK & LOOP CLOSURE |
| FEATURES | MID VISOR · UNSTRUCTURED FRONT PANEL · LIGHT BRUSHED |

Tank

- Main Fabric: 100% cotton



CAMOUFLAGE



KHAKI



BLACK



NAVY



OLIVE



TECH SPECS

ONE SIZE · 235 GSM · HOOK & LOOP CLOSURE

FEATURES

CURVED VISOR · LIGHT BRUSHED

Uniform

- Main Fabric: 100% cotton



BLACK



NAVY



OLIVE



TECH SPECS

ONE SIZE · 280 GSM · HOOK & LOOP CLOSURE

FEATURES

CURVED VISOR · SELF FABRIC SWEATBAND · GARMENT WASHING

Urban

• Main Fabric: 100% cotton



KHAKI



BLACK



OLIVE

| | |
|------------|---|
| TECH SPECS | S/M - L/XL · 280 GSM · FULLY CLOSED WITH ADJUSTABLE BUCKLE |
| FEATURES | CURVED VISOR · METAL EYELETS · GARMENT WASHING SELF FABRIC SWEATBAND |

Viral

• Main Fabric: 47% viscose - 23% polyester - 30% nylon



BURGUNDY MEL



GREY MEL



DARK GREY MEL

| | |
|------------|-----------------|
| TECH SPECS | ONE SIZE · 78 G |
|------------|-----------------|

Whippy

- Main Fabric: 100% polyester
- Side & Back: 97% nylon - 3% elastane



GREY MELANGE



DARK GREY MELANGE



ROYAL MELANGE

| | |
|------------|---|
| TECH SPECS | ONE SIZE · 86 GSM · RUBBER HOOK & LOOP CLOSURE |
| FEATURES | MID VISOR · STRETCHABLE FABRIC · DRY-TECH SWEATBAND |



Wind

• Main Fabric: 100% acrylic



ORANGE FLUO



AVIO



LIGHT BLUE



WHITE



BURGUNDY



FUCHSIA FLUO



BEIGE



YELLOW FLUO



YELLOW



GREY MEL



LIGHT GREY



MUSTARD



BROWN



OFF RED



BLACK



NAVY



SAPPHIRE



OLIVE



PETROL



RED



CORAL



PINK



ROYAL



TURQUOISE



BOTTLE GREEN



GREEN FLUO



LIME GREEN



PURPLE

TECH SPECS

ONE SIZE · 70 G



Winner

• Main Fabric: 100% cotton



BLACK



NAVY



RED

TECH SPECS

ONE SIZE · 320 GSM · FULL METAL BUCKLE WITH SEWN HOLE

FEATURES

CURVED VISOR · STRUCTURED FRONT PANEL · LAUREL ON VISOR
SELF FABRIC SWEATBAND

Woolly

• Main Fabric: 70% acrylic - 30% wool



NAVY



YELLOW



NAVY



RUSTY

TECH SPECS

ONE SIZE · 56 G

Zoom

• Main Fabric: 65% polyester - 35% cotton



| | |
|------------|--|
| TECH SPECS | ONE SIZE · 180 GSM · HOOK & LOOP CLOSURE |
| FEATURES | CURVED VISOR · STRUCTURED FRONT PANEL |

Zoom Piping Sandwich

• Main Fabric: 65% polyester - 35% cotton



| | |
|------------|---|
| TECH SPECS | ONE SIZE · 180 GSM · HOOK & LOOP CLOSURE |
| FEATURES | CURVED VISOR · STRUCTURED FRONT PANEL · PIPING ON VISOR |

Index

| | | | |
|---------------------|-----|---------------------|-----|
| ACTION | 126 | FAM-S | 37 |
| ACTION-S | 35 | FEED | 140 |
| ANDY | 58 | FIJI | 72 |
| ARMY | 127 | FLASH | 140 |
| ARMY-S | 47 | FLASH-S | 55 |
| BANDANA GOAL | 128 | FOREVER | 141 |
| BANDANA GOAL-S | 57 | FOREVER-S | 52 |
| BANDANA LONG | 128 | FRASER | 73 |
| BANK | 129 | FREEDOM BASIC | 141 |
| BANK FIVE-S | 59 | FREEDOM BASIC-S | 56 |
| BASE | 129 | GEAR | 142 |
| BUCKET COTTON-S | 51 | GEAR-S | 40 |
| BEAT | 130 | GEO | 75 |
| BEAT-S | 60 | GHIBLI | 76 |
| BILL-S | 61 | GLOVES TOUCH | 142 |
| BIRK | 61 | GLOBE TROTTER-S | 77 |
| BLOG | 130 | GROOVY | 143 |
| BOLT | 131 | GATSBY STREET-S | 74 |
| BOND-S | 62 | HELPY | 143 |
| BRAD-S | 62 | HIT | 144 |
| BREEZY | 131 | HIT-S | 30 |
| BREEZY-S | 45 | HELPY-S | 46 |
| BROOKLIN | 132 | HOLLY | 78 |
| BRYCE | 64 | HOTTY | 145 |
| BUCKET COTTON | 132 | HOTTY-S | 79 |
| BUCKET POCKET | 133 | ISAR | 25 |
| BUCKET POCKET-S | 65 | JAMES | 80 |
| CARGO | 133 | JOLLY | 145 |
| CASE | 134 | JOSHUA | 81 |
| CHAMPION | 134 | KAI | 82 |
| CHAMPION-S | 43 | KID MAYO | 84 |
| CORDY-S | 66 | KID RAPPER-S | 33 |
| CREEP-S | 67 | KID START FIVE | 146 |
| CRUZ | 68 | KID FRASER | 83 |
| DAD HAT DESTROYED | 136 | KID NOMAD-S | 85 |
| DAD HAT DESTROYED-S | 69 | KID STAR-S | 88 |
| DAD HAT | 135 | KID WIND-S | 89 |
| DAD HAT-S | 70 | KID YALA | 90 |
| DIGG | 136 | KID RECY FIVE | 86 |
| DIGG-S | 36 | KID SNAP BACK-S | 87 |
| DOCKER | 137 | LIBERTY FIVE BUCKLE | 147 |
| EKO BEANIE | 137 | LIBERTY FIVE | 146 |
| ENERGY | 138 | LIBERTY SANDWICH | 148 |
| ERIE | 27 | LIBERTY SANDWICH-S | 91 |
| ESTORIL | 138 | LIBERTY SIX BUCKLE | 149 |
| ESTORIL-S | 71 | LIBERTY SIX | 149 |
| EXTREME | 139 | MAPLE | 92 |
| FAM | 139 | MAUI | 26 |

| | | | |
|-------------------------|-----|----------------------|-----|
| MOOVER | 150 | SNAP 90S | 159 |
| MOOVER-S | 93 | SNAP BACK | 160 |
| NELSON | 94 | SNAP BACK-S | 115 |
| NOMAD-S | 95 | SNAP FIVE | 161 |
| OAK | 96 | SNAP FIVE-S | 116 |
| PICO | 28 | SNAP MESH-S | 117 |
| PIER-S | 97 | SNOBBY | 161 |
| PILOT | 150 | SNOW FLAP STOPPER | 162 |
| PILOT-S | 41 | SNOW FLAP STOPPER-S | 118 |
| PILOT PIPING SANDWICH | 151 | SONIC | 162 |
| PILOT PIPING SANDWICH-S | 42 | SONIC-S | 119 |
| PITCH | 98 | SPACE | 163 |
| POWELL | 99 | SPORT SANDWICH | 163 |
| PURE | 100 | SPORT SANDWICH-S | 34 |
| RACING | 152 | START FIVE ITALIA | 165 |
| RAPPER CANVAS | 153 | START FIVE | 164 |
| RAPPER CANVAS-S | 102 | START FIVE SANDWICH | 165 |
| RAPPER COTTON | 154 | START SIX | 166 |
| RAPPER COTTON-S | 29 | SWING | 166 |
| RAPPER DESTROYED | 155 | SWING-S | 50 |
| RAINY-S | 101 | TANK | 167 |
| RAPPER | 152 | TECHNO FLAP-S | 120 |
| RAPPER-S | 32 | TANK-S | 48 |
| RAPPER JERSEY | 155 | UNIFORM | 167 |
| RAPPER MELANGE | 156 | UNIFORM-S | 49 |
| RAPPER SUEDE | 156 | URBAN | 168 |
| RAPPER SUEDE-S | 38 | VIRAL | 168 |
| RAY-S | 103 | WHIPPY | 169 |
| RECY FIVE ITALIA | 53 | WIND | 170 |
| RECY FIVE PIPING | 54 | WINNER | 171 |
| RECORD | 157 | WINNER-S | 44 |
| RECORD-S | 39 | WIND-S | 122 |
| RECY BEANIE | 104 | WIND-S WITH PATCH | 22 |
| RECY FIVE | 106 | WIND-S WITH POMPOM | 23 |
| RECY SIX | 107 | WIND SCARF-S | 121 |
| RECY FEEL | 105 | WOOLLY | 171 |
| REFLECT | 157 | WORKOUT-S | 123 |
| REFLECT-S | 109 | YALA | 124 |
| RECY THREE | 108 | YUKON | 24 |
| RIO | 110 | ZION | 125 |
| ROLAND | 158 | ZOOM | 172 |
| SAND | 111 | ZOOM PIPING SANDWICH | 172 |
| SHINE | 112 | | |
| SHORE | 113 | | |
| SHOT | 158 | | |
| SHOT-S | 31 | | |
| SKATE | 159 | | |
| SKYE | 114 | | |



Headwear